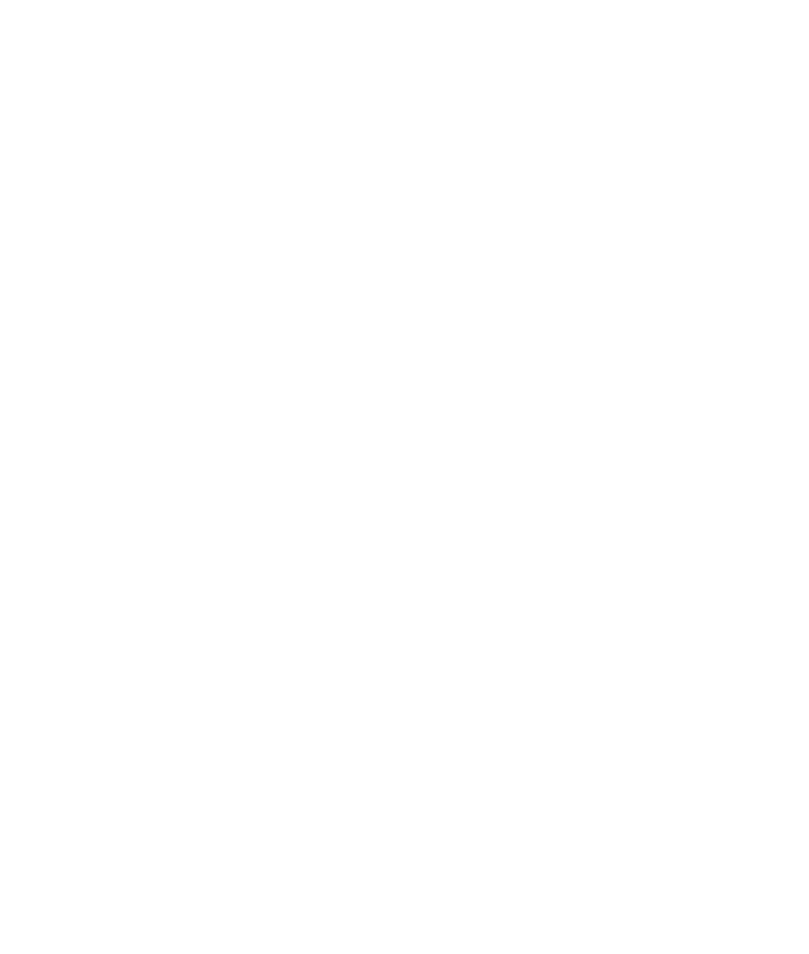
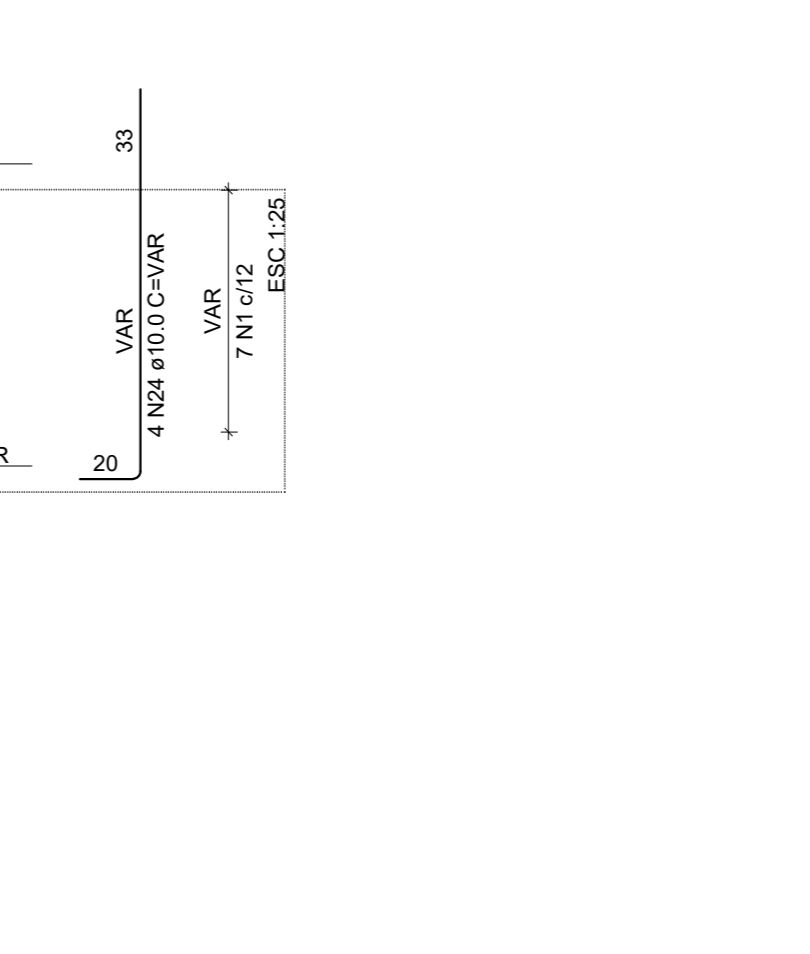
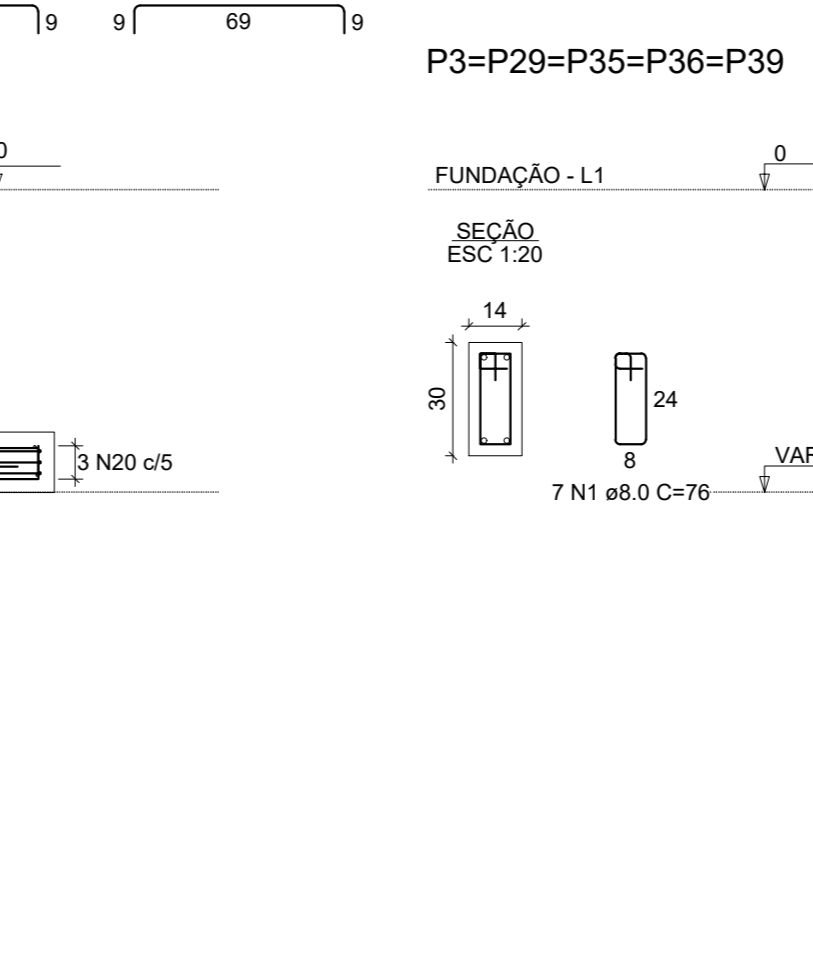
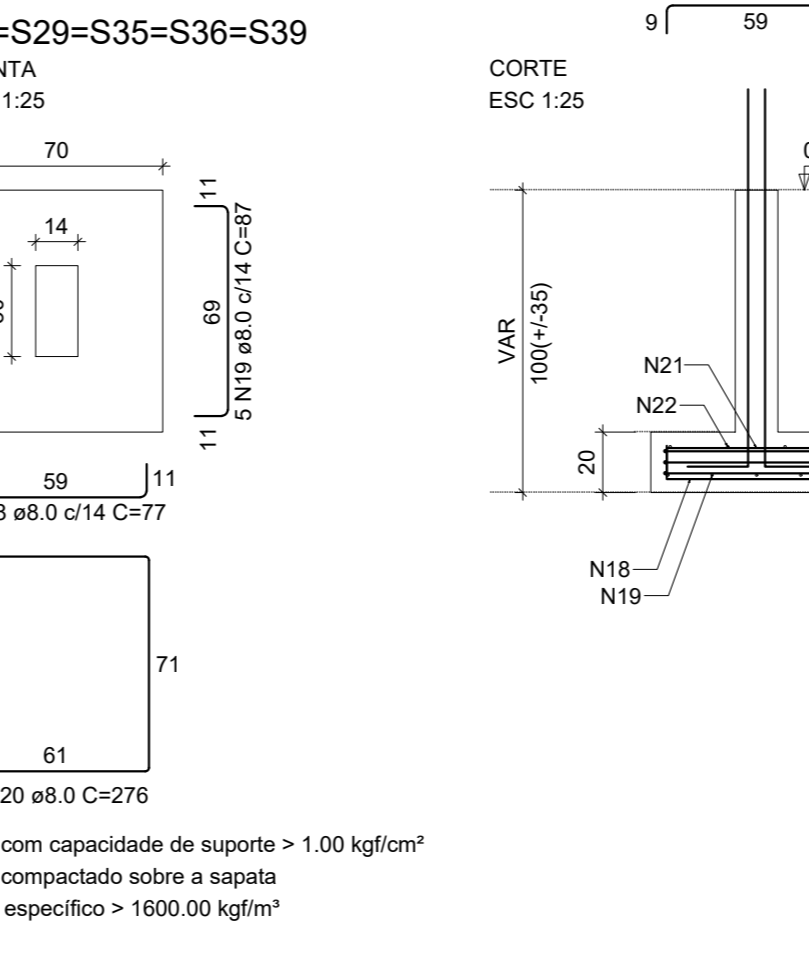
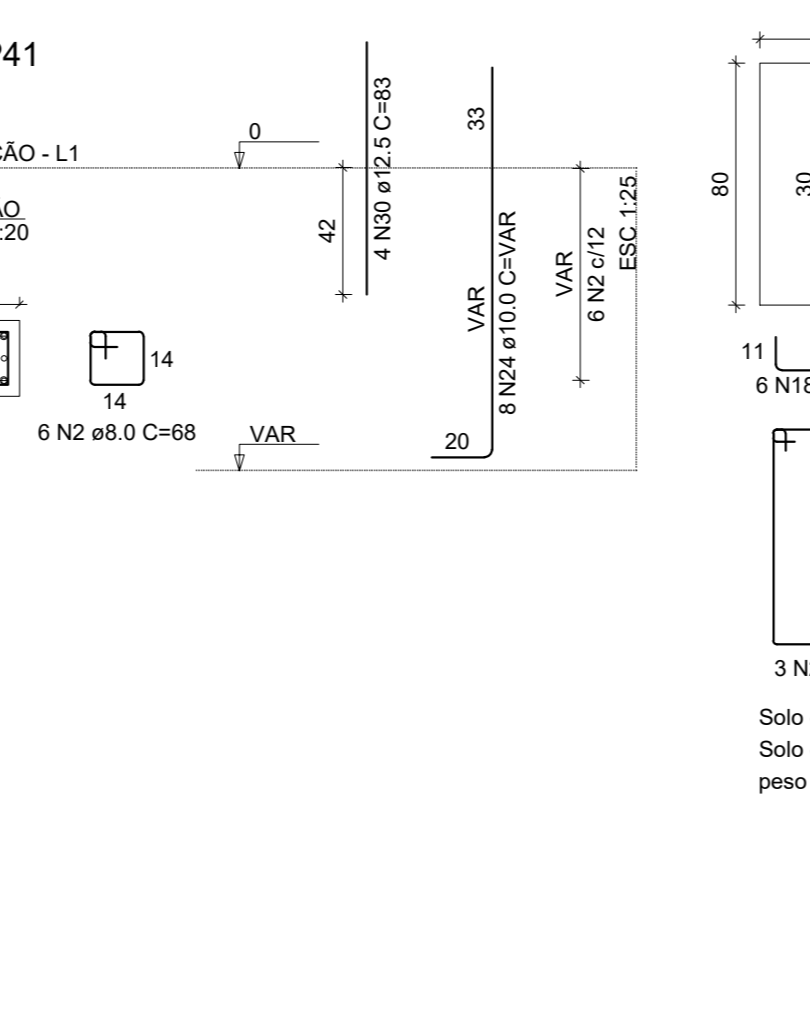
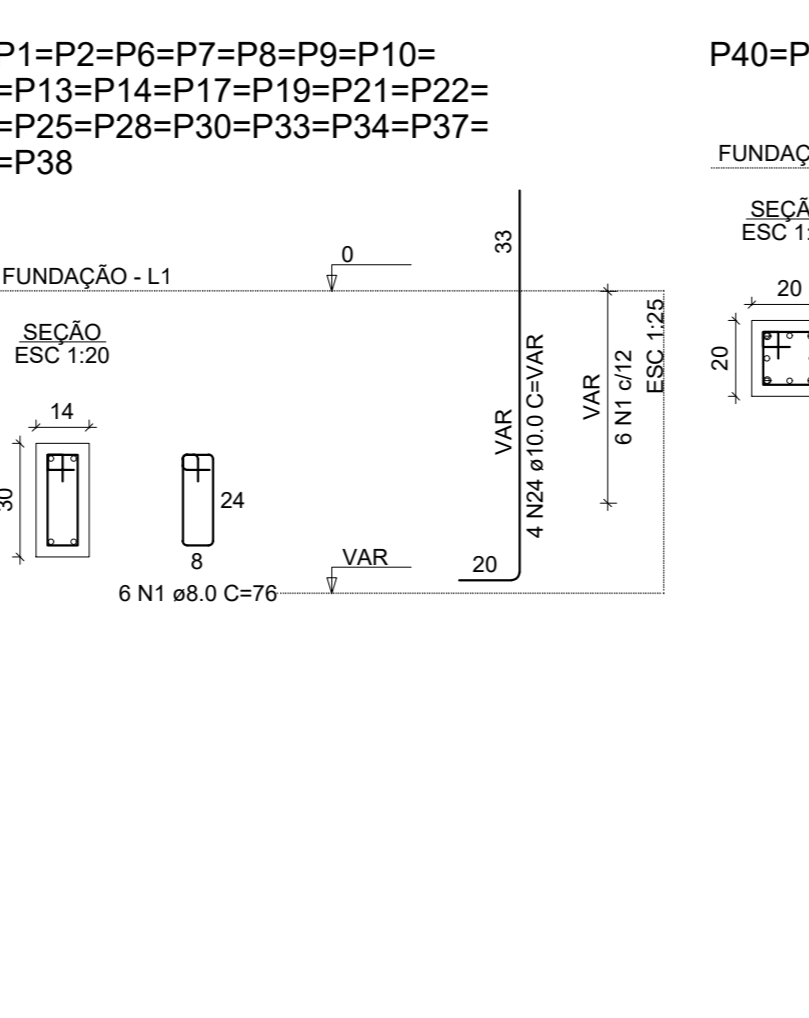
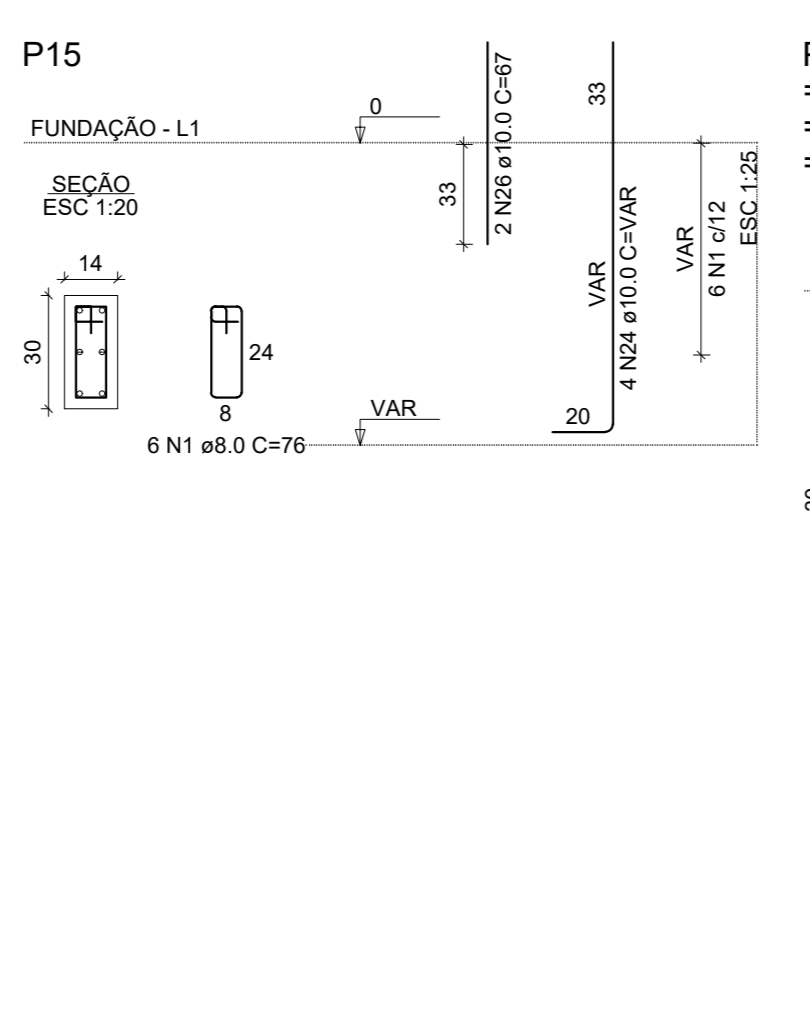
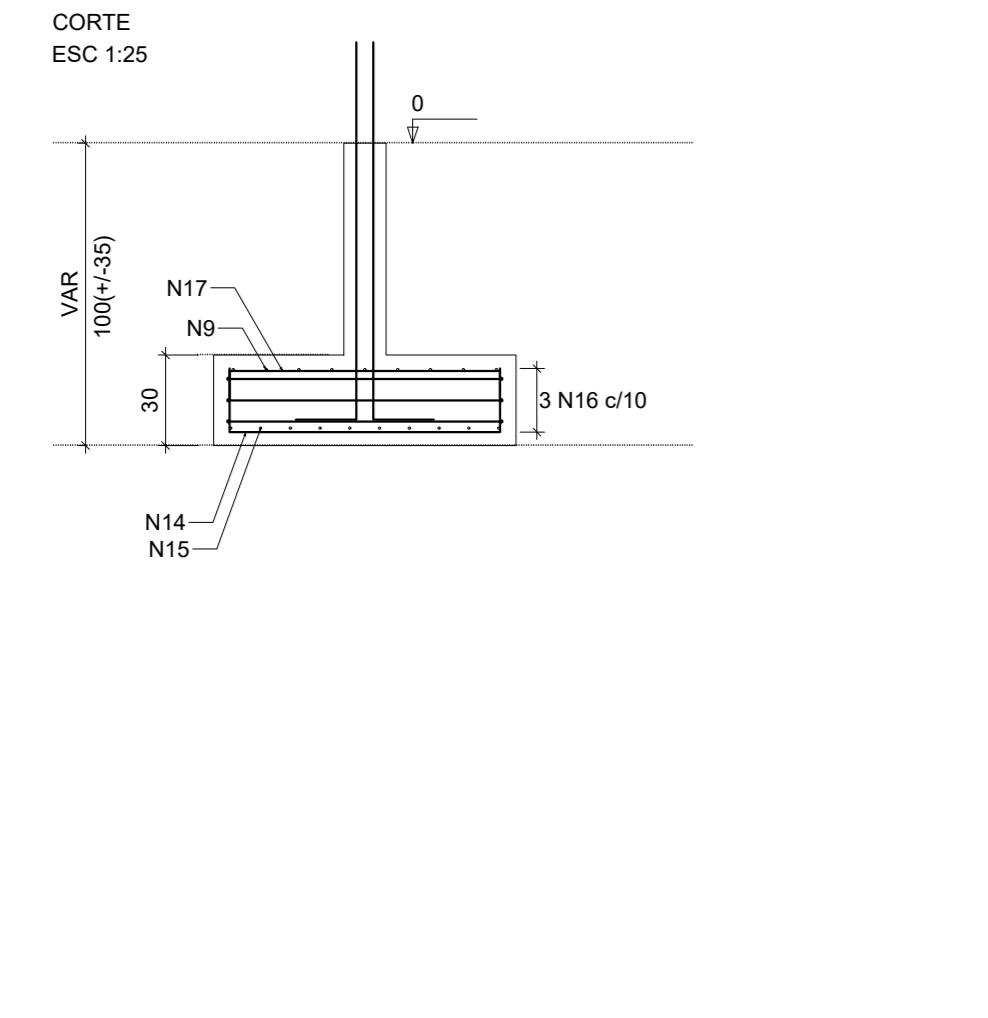
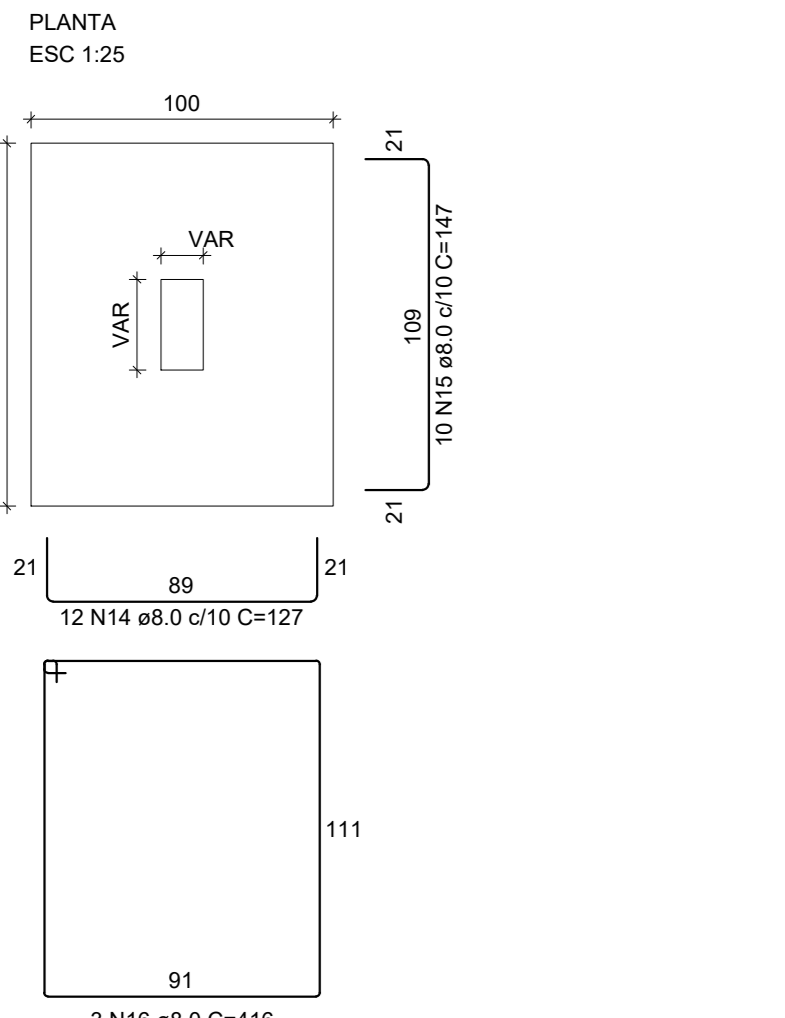


S1=S2=S6=S7=S8=S9=S10=S13=S14=S15=S17
 =S19=S21=S22=S25=S28=S30=S33=S34=S37
 =S38=S40=S41

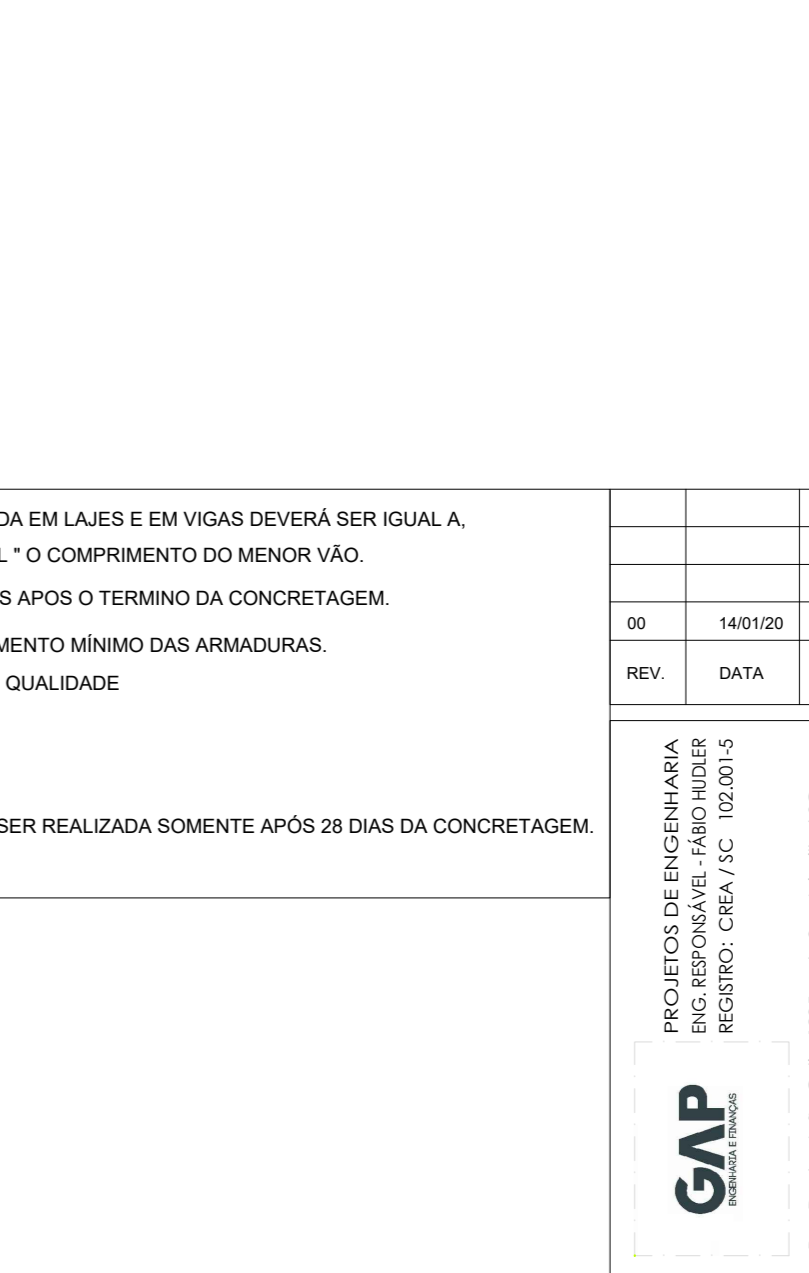
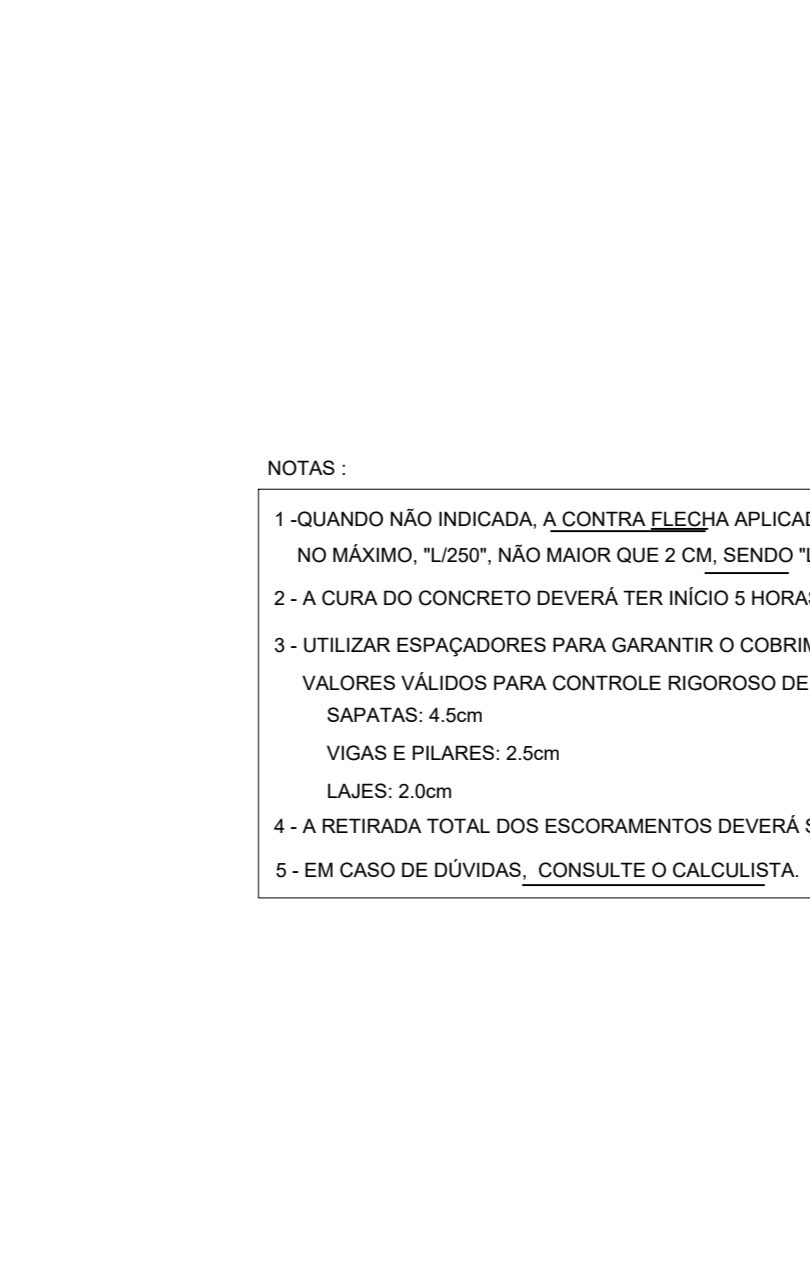
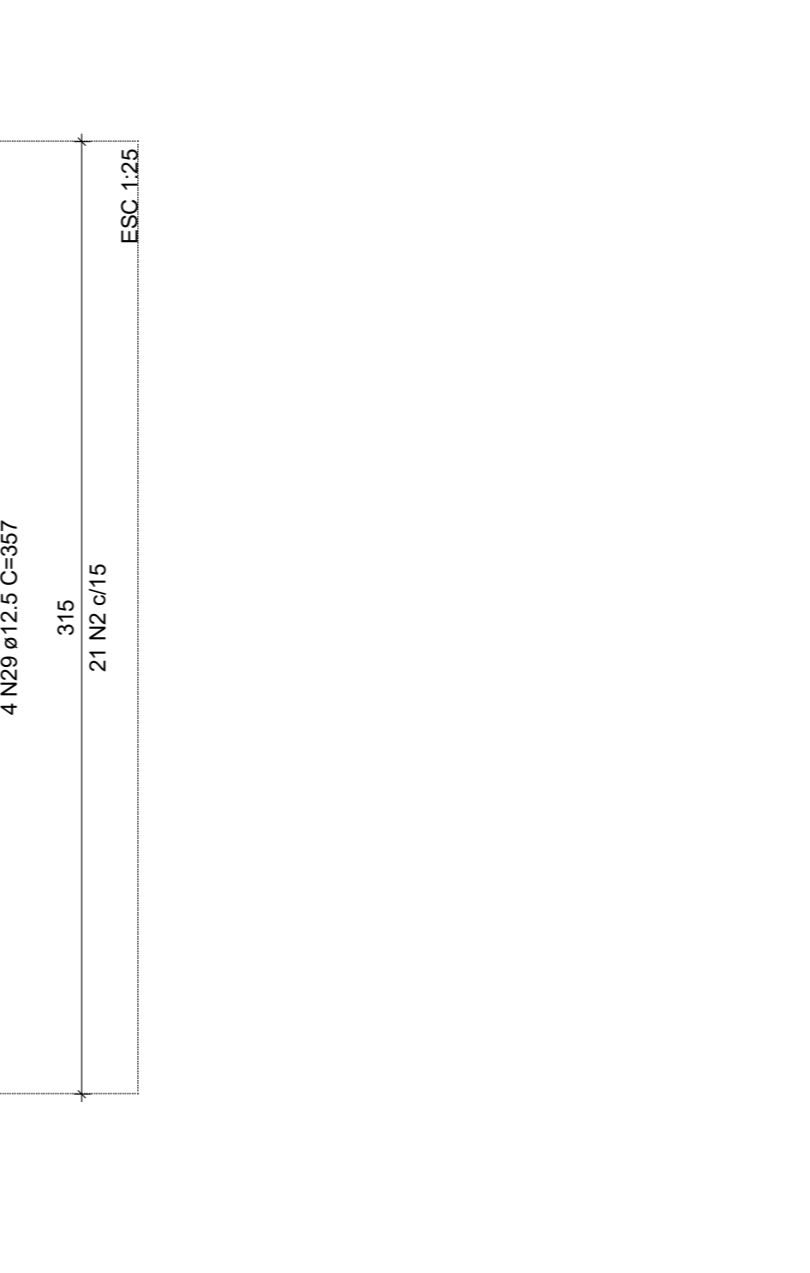
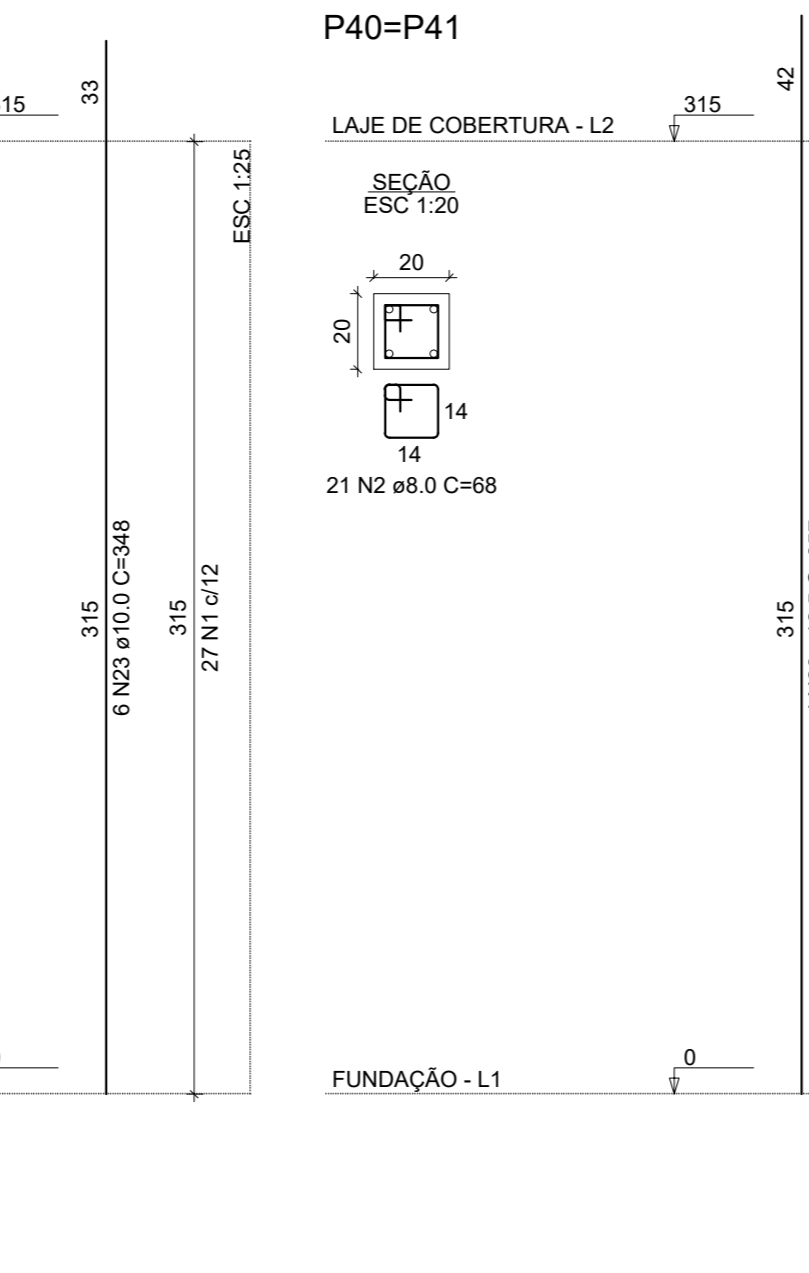
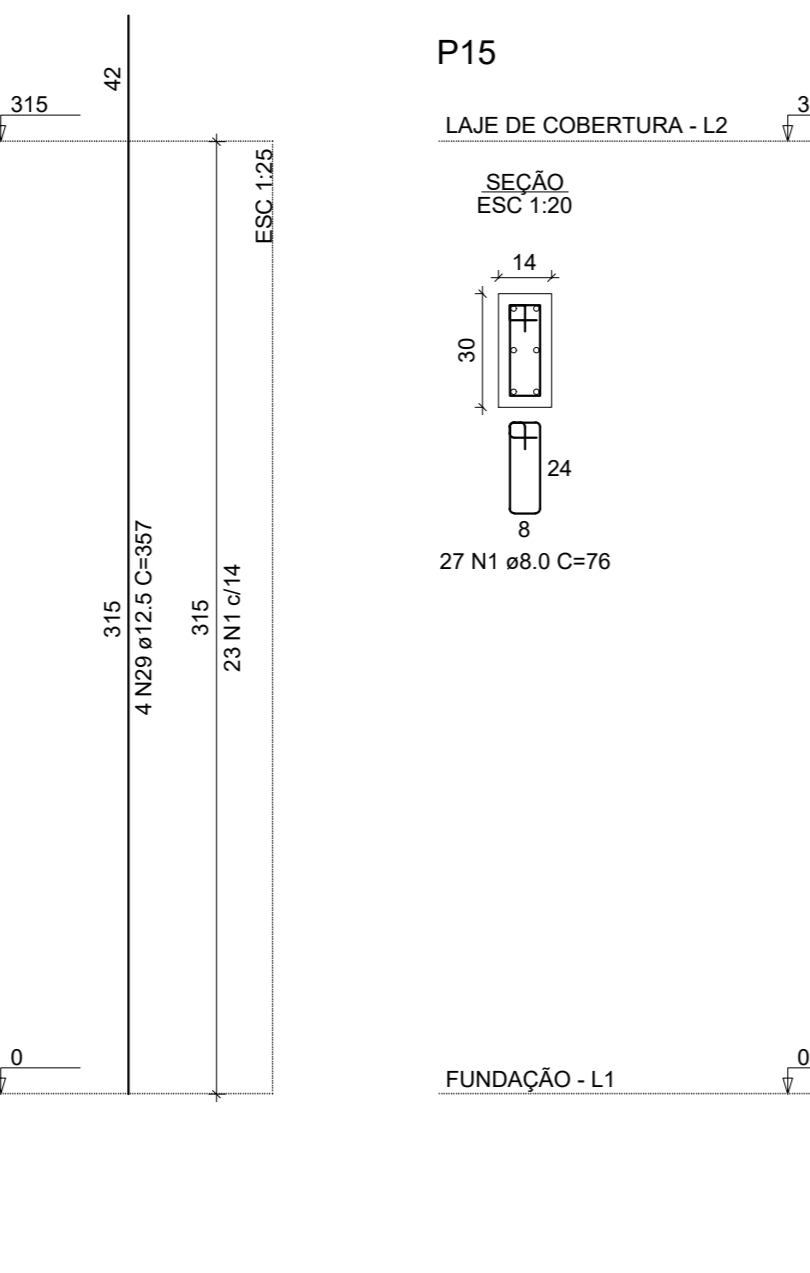
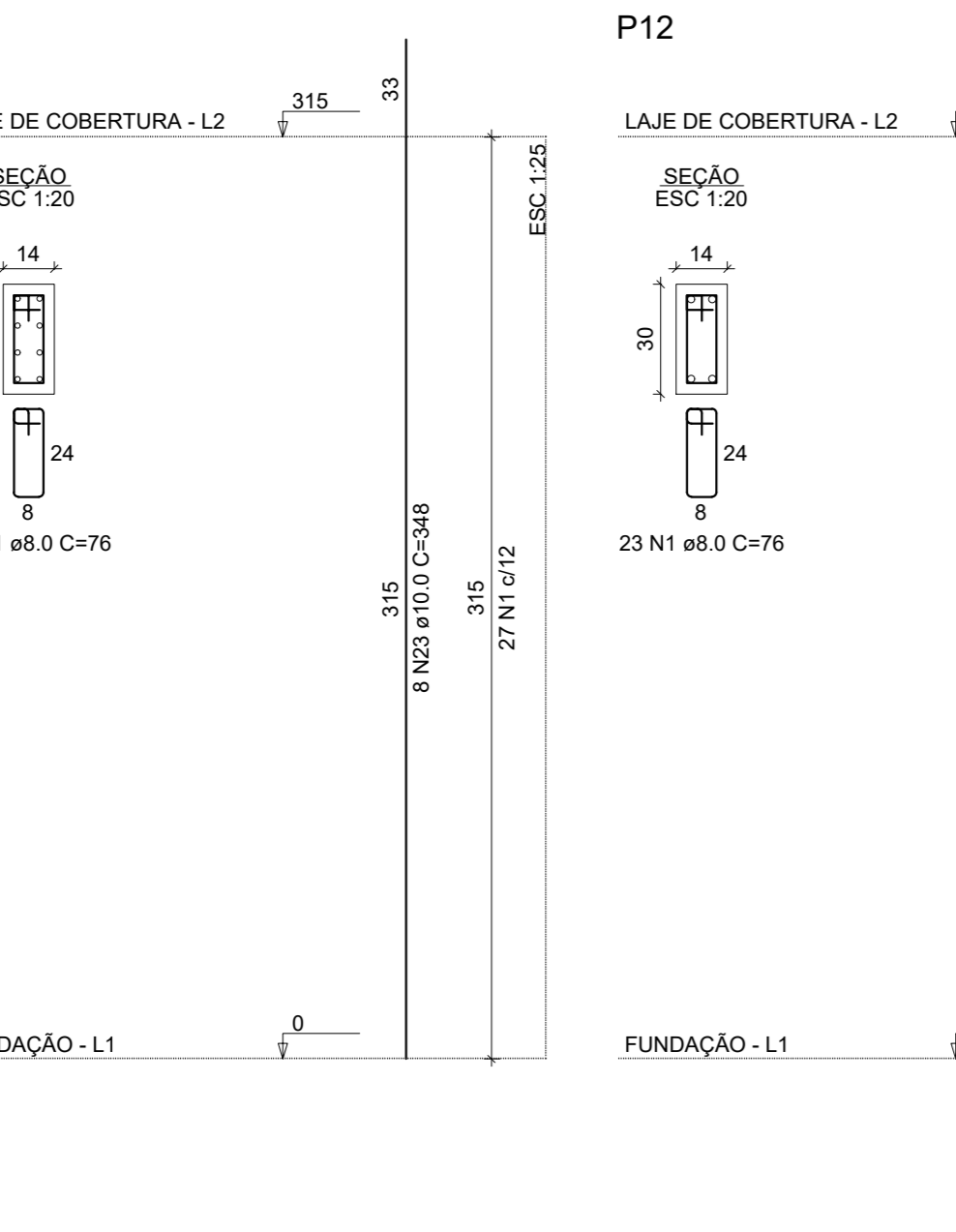
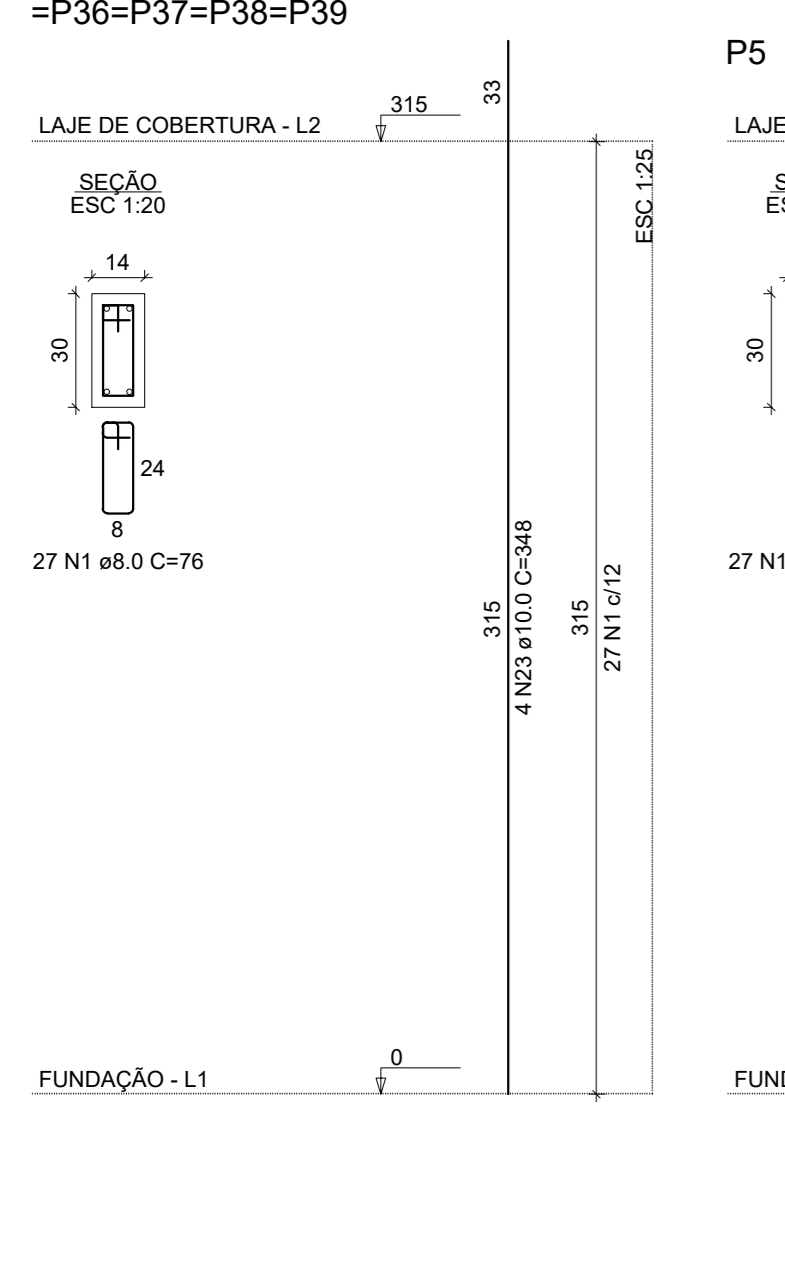
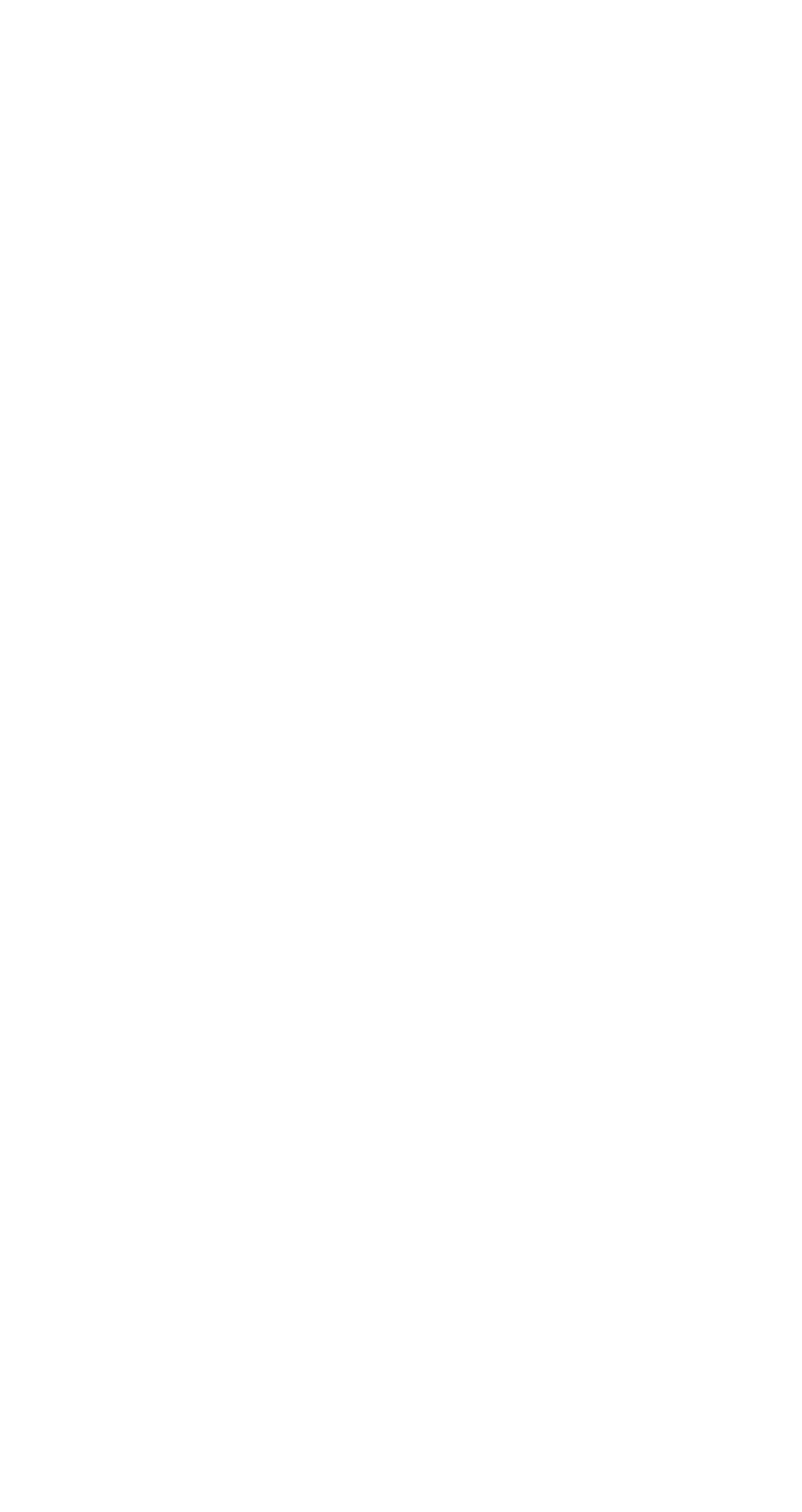
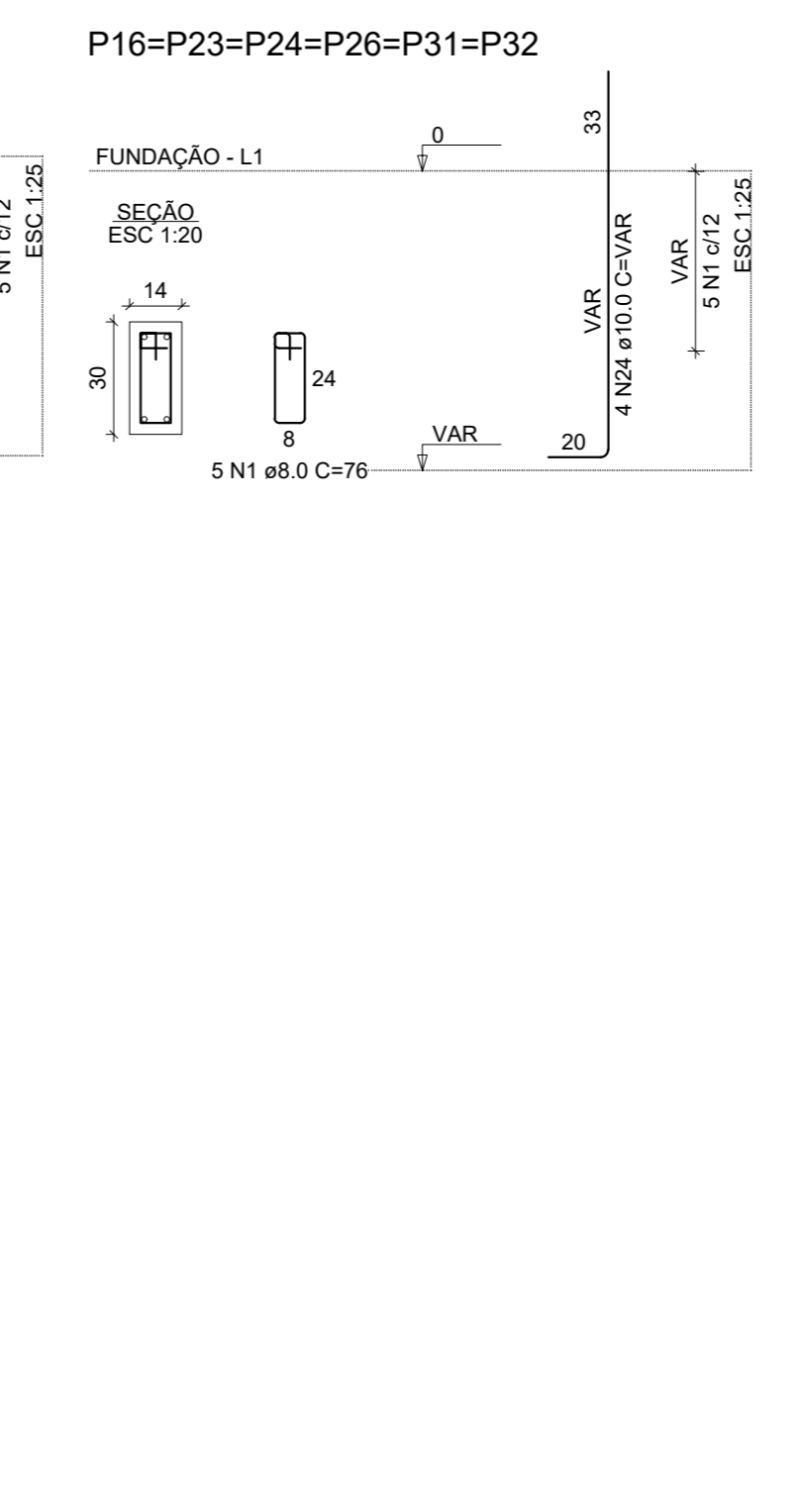
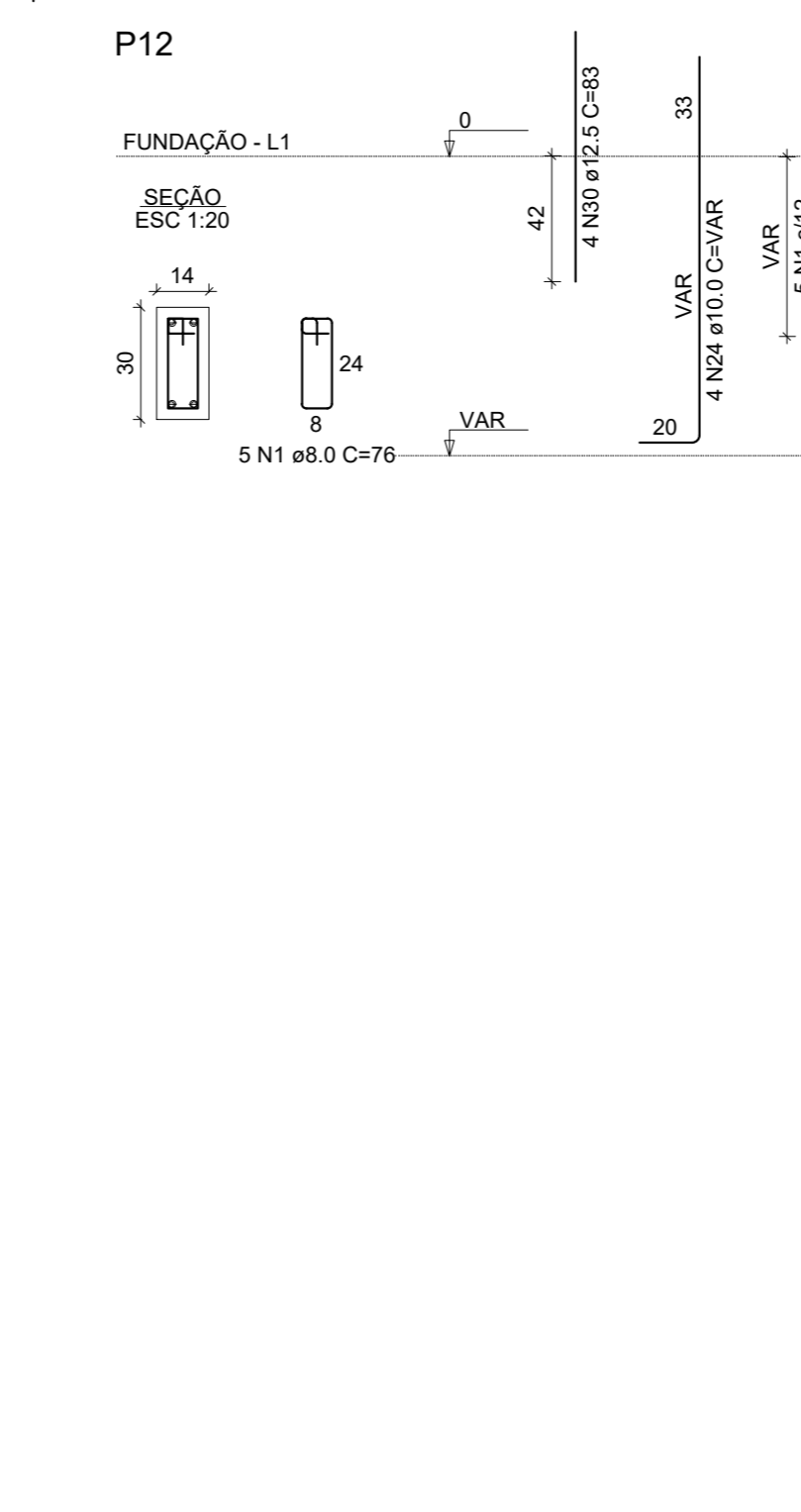
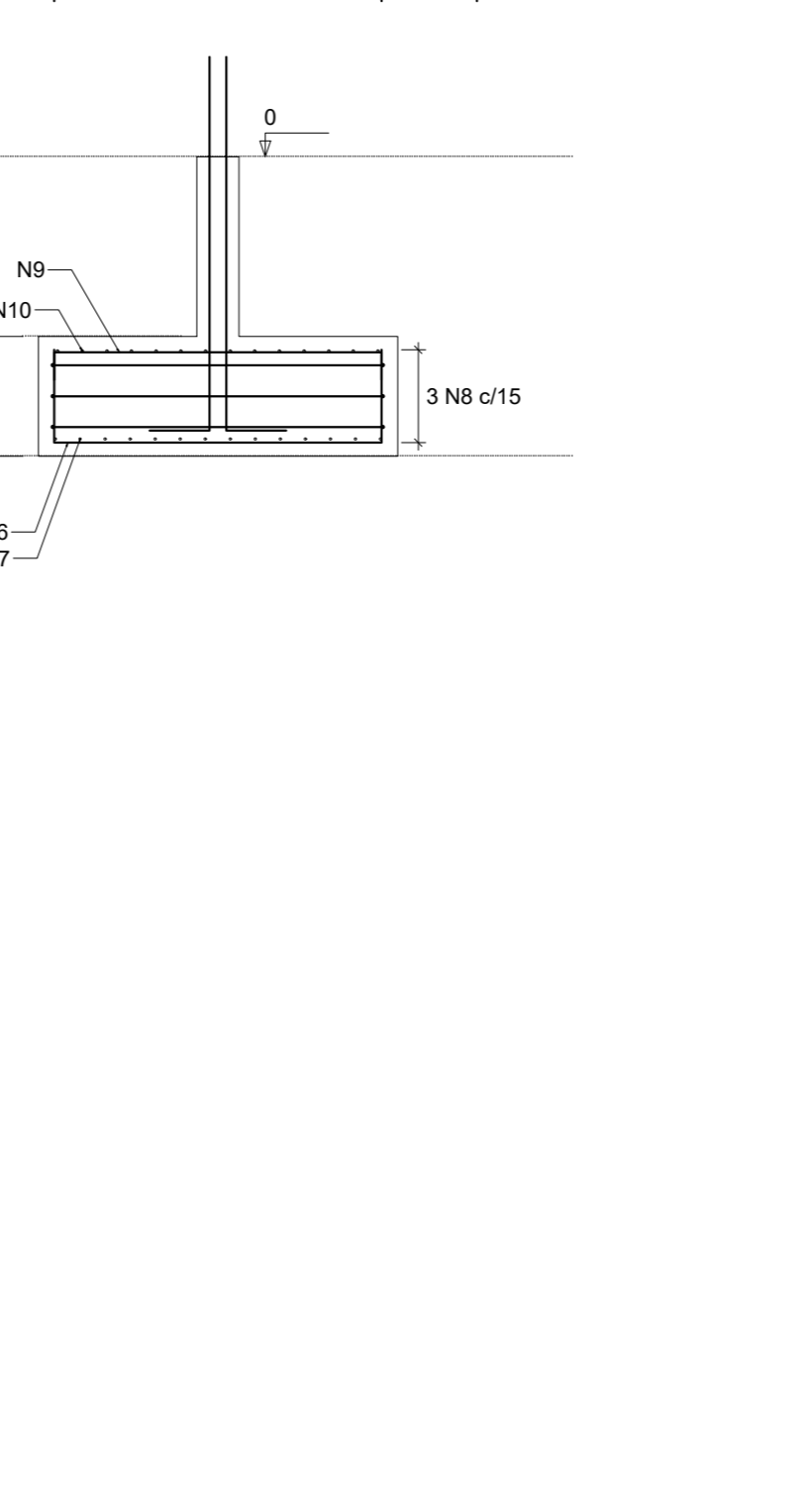
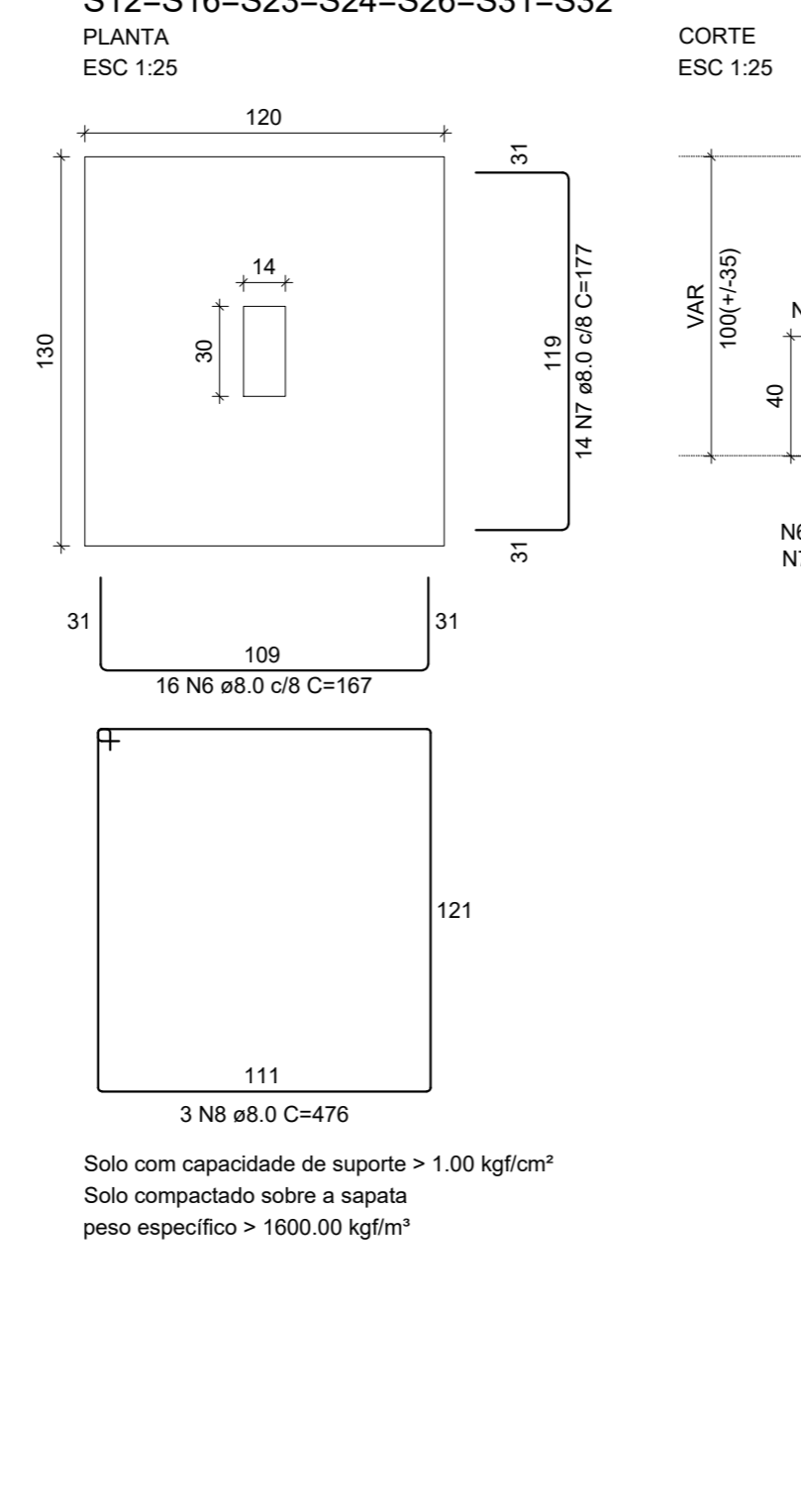
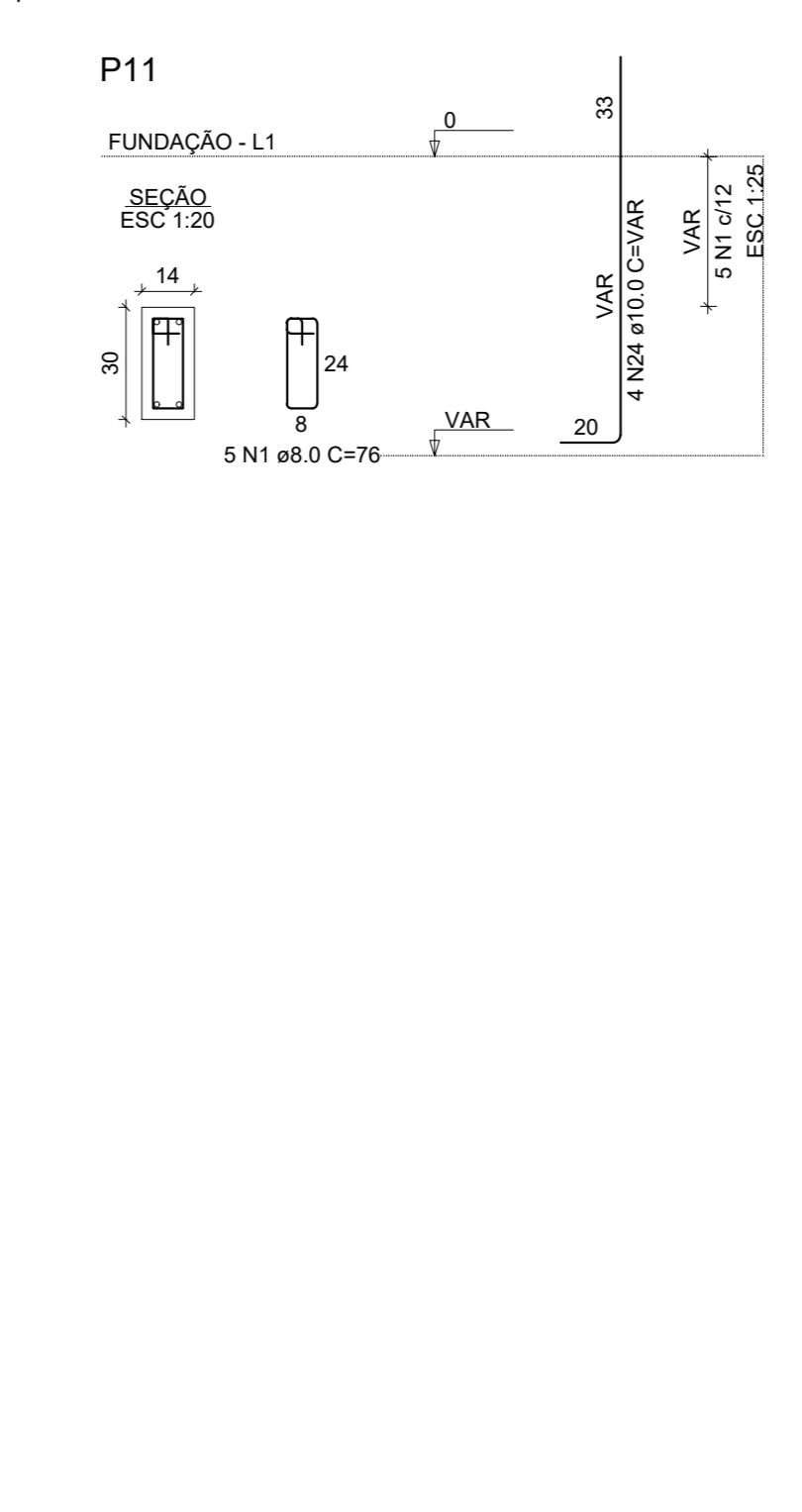
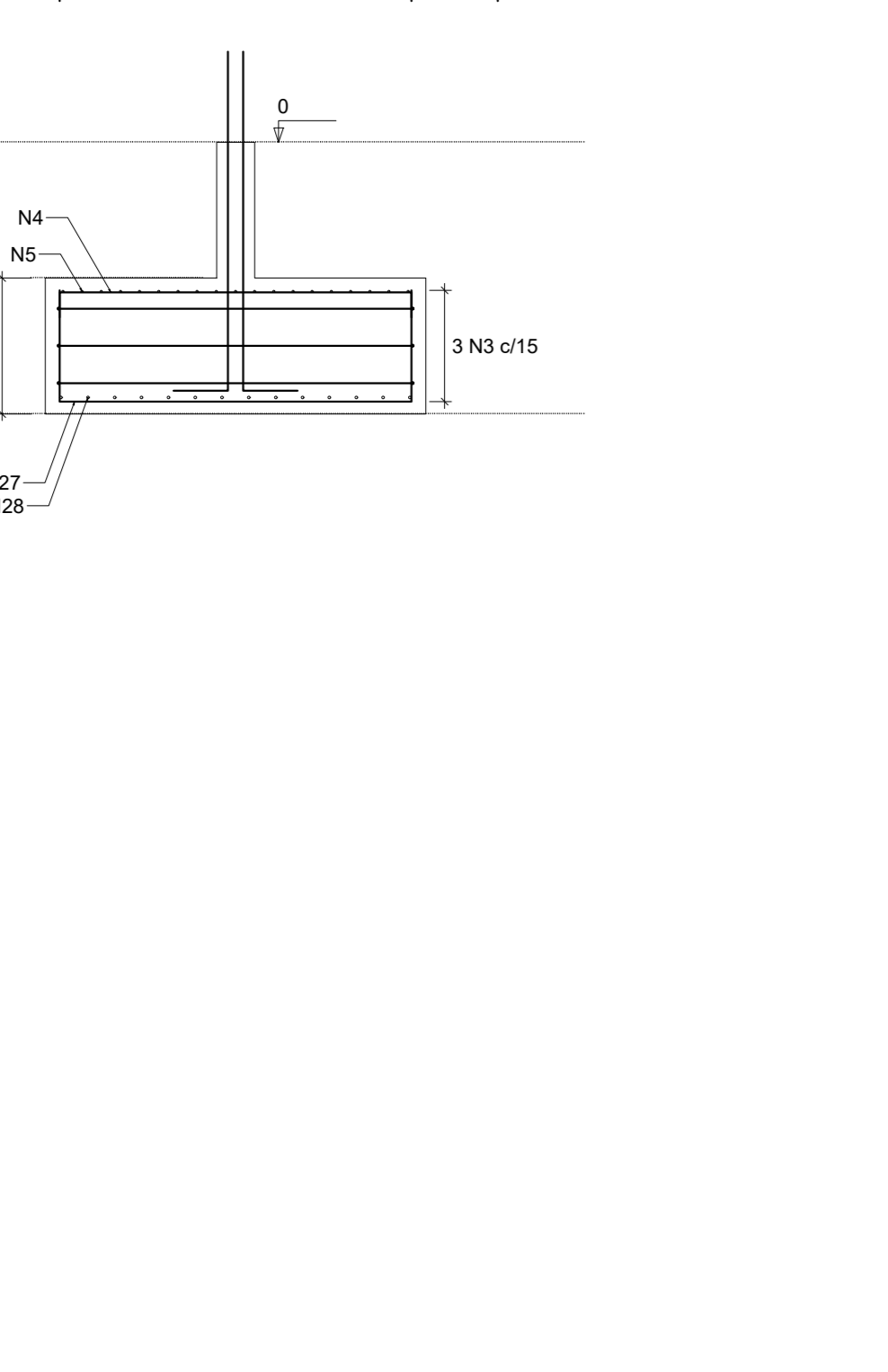
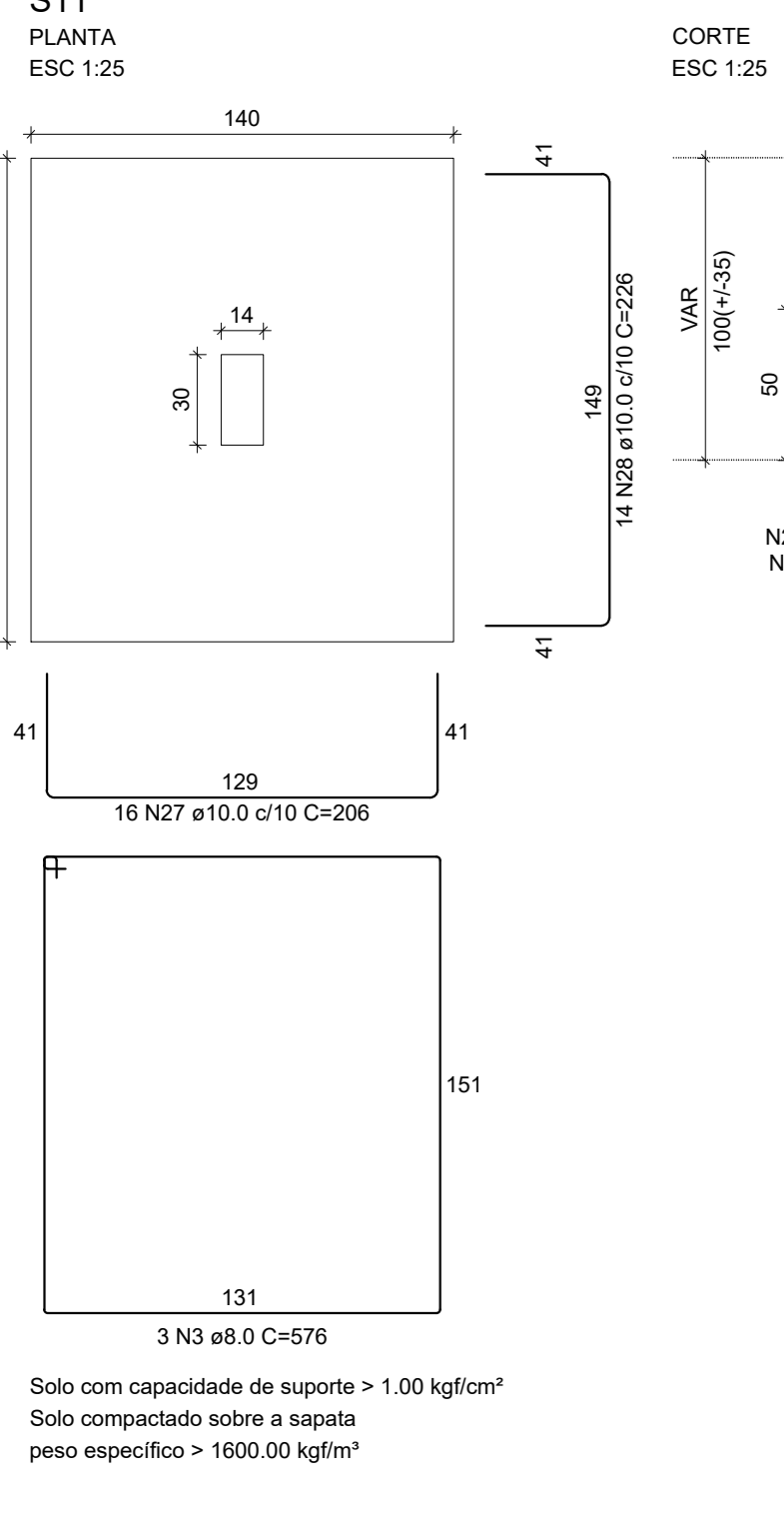
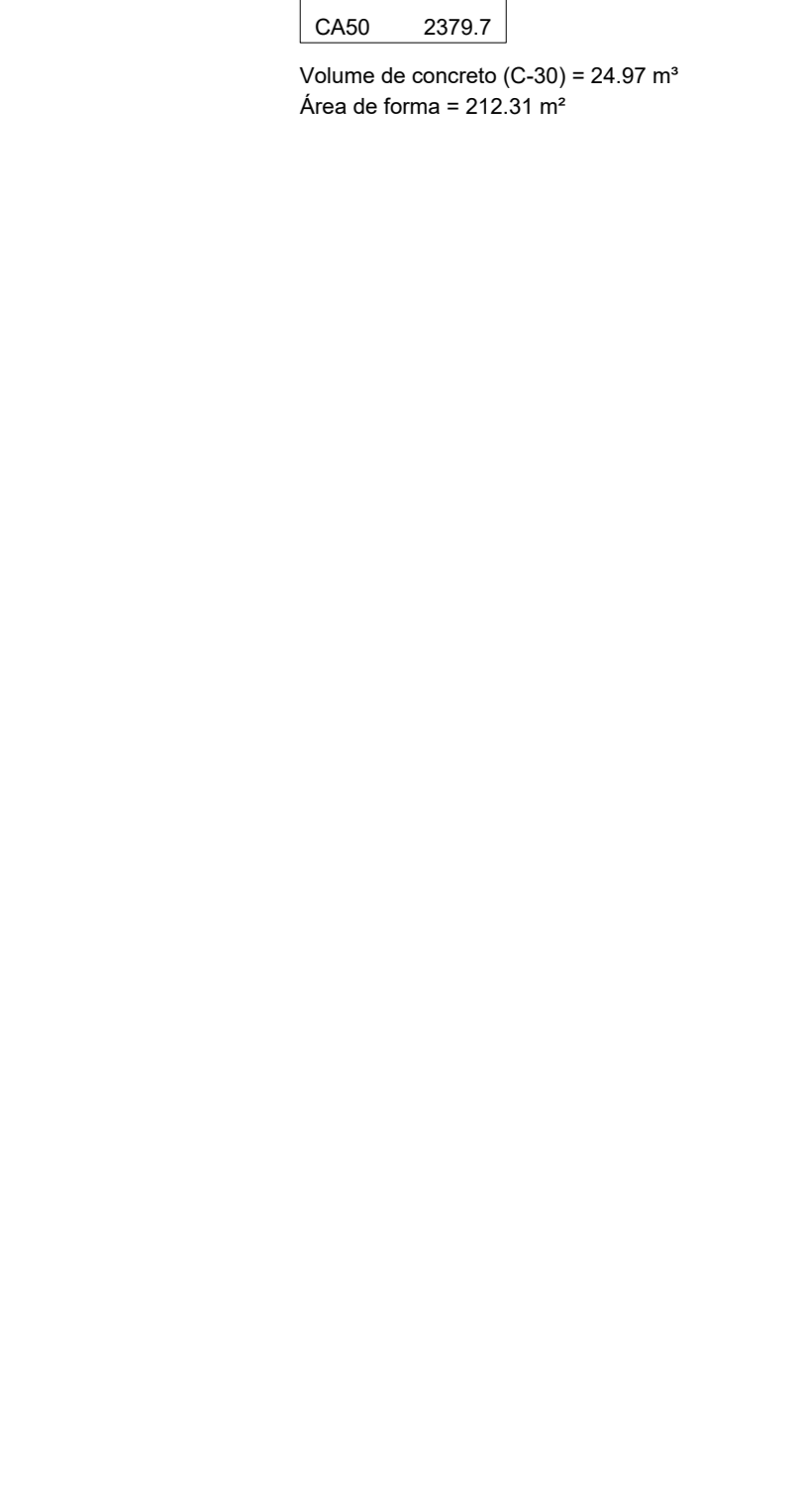
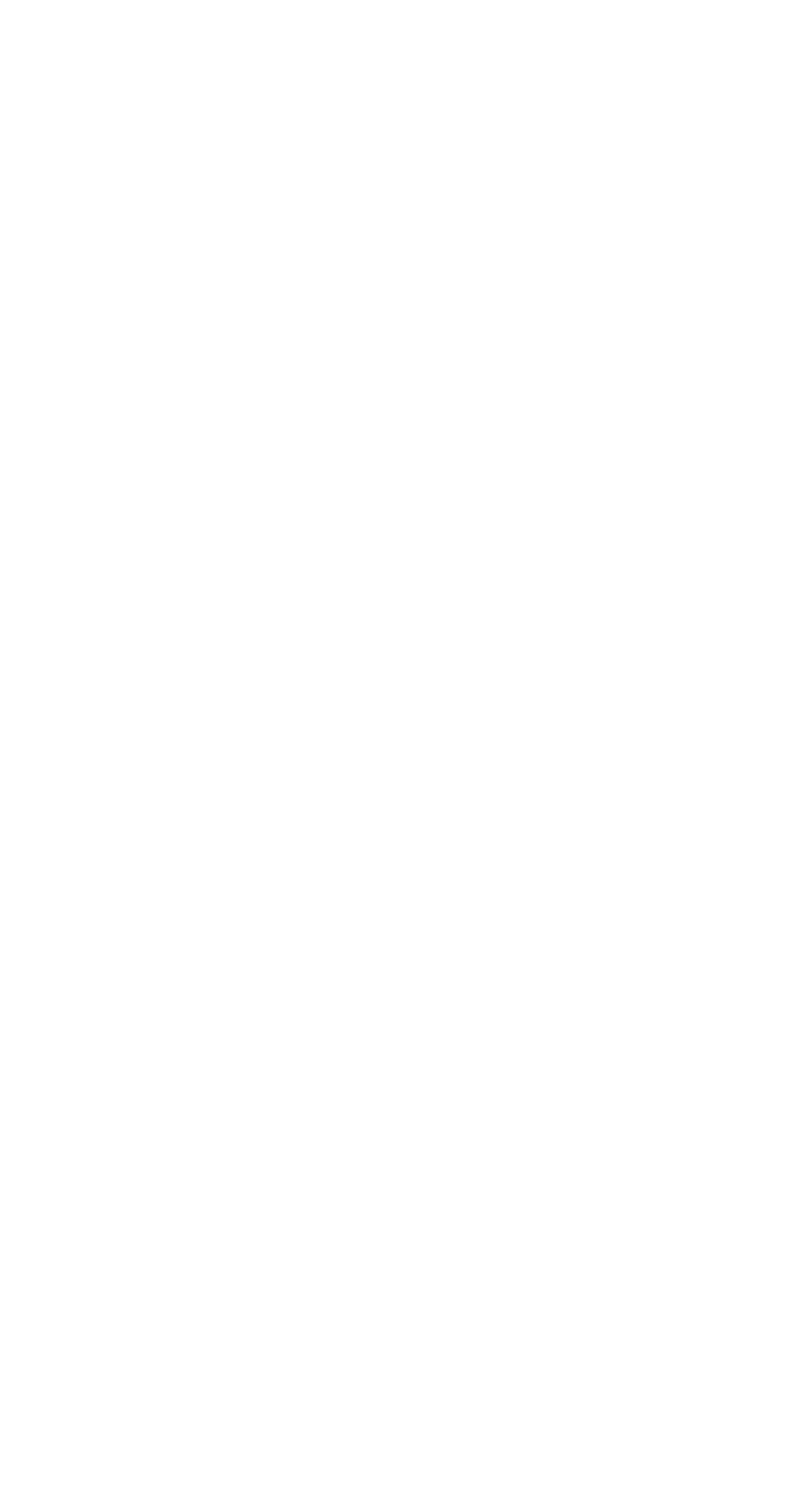
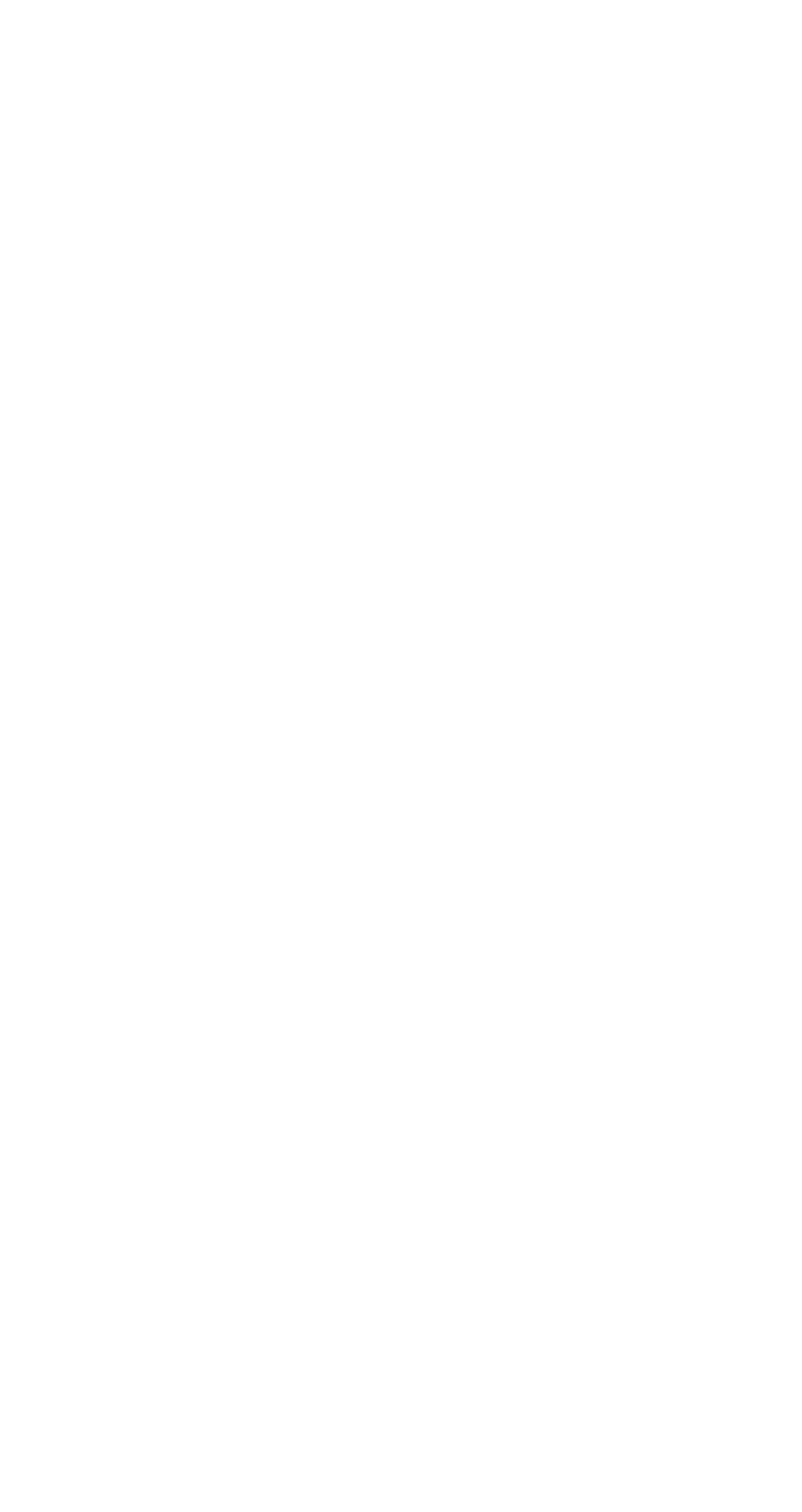
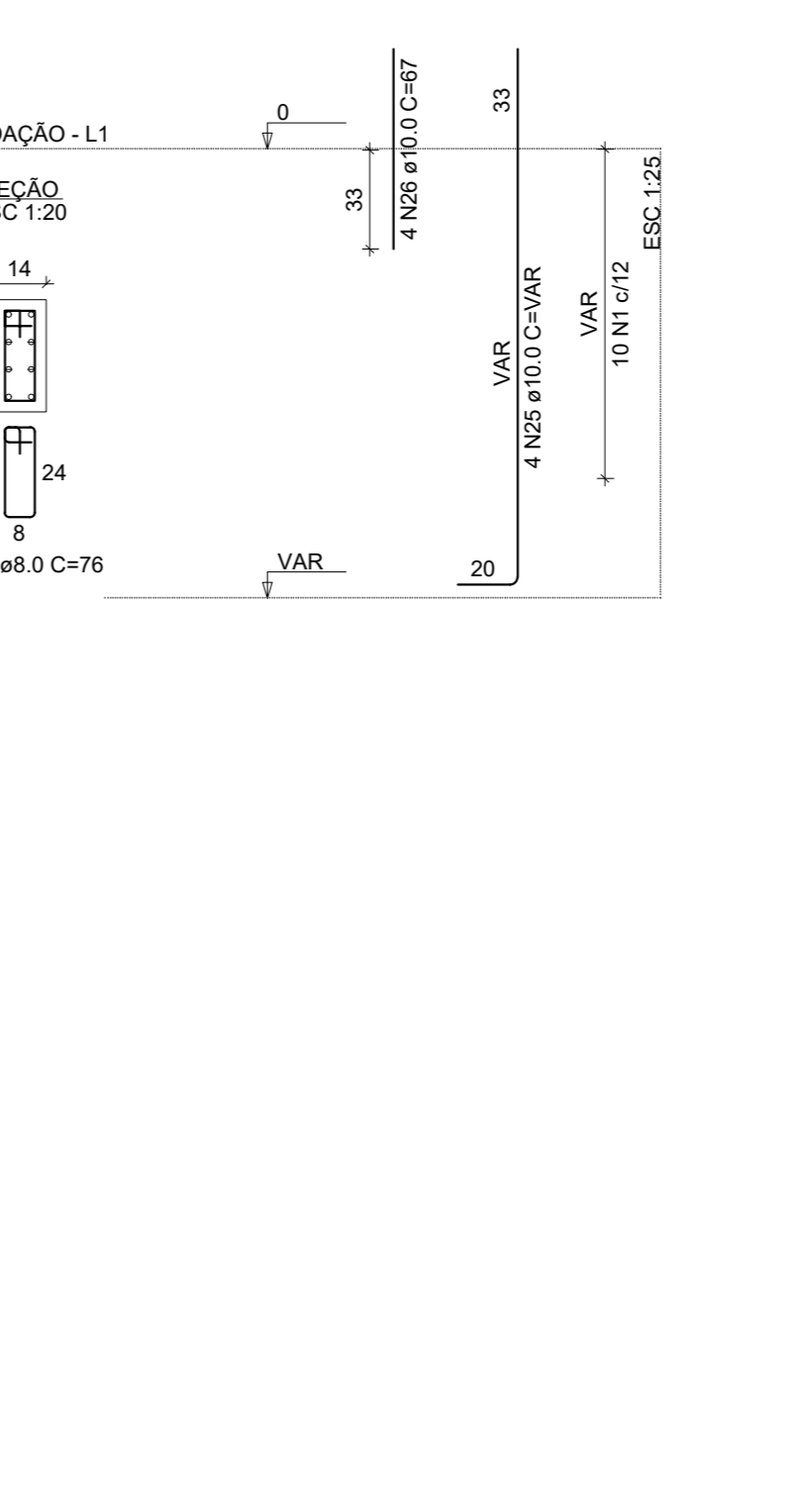
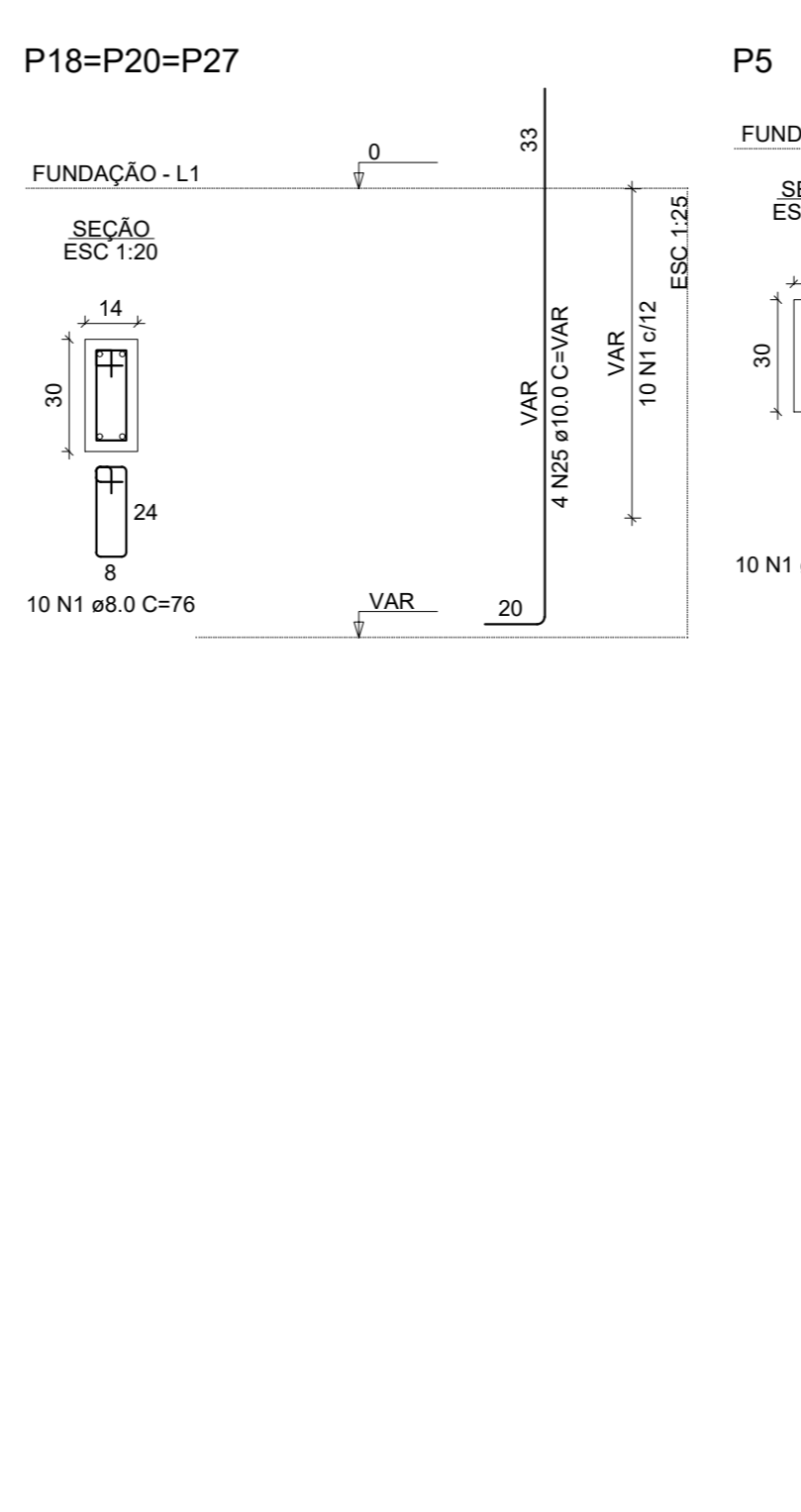
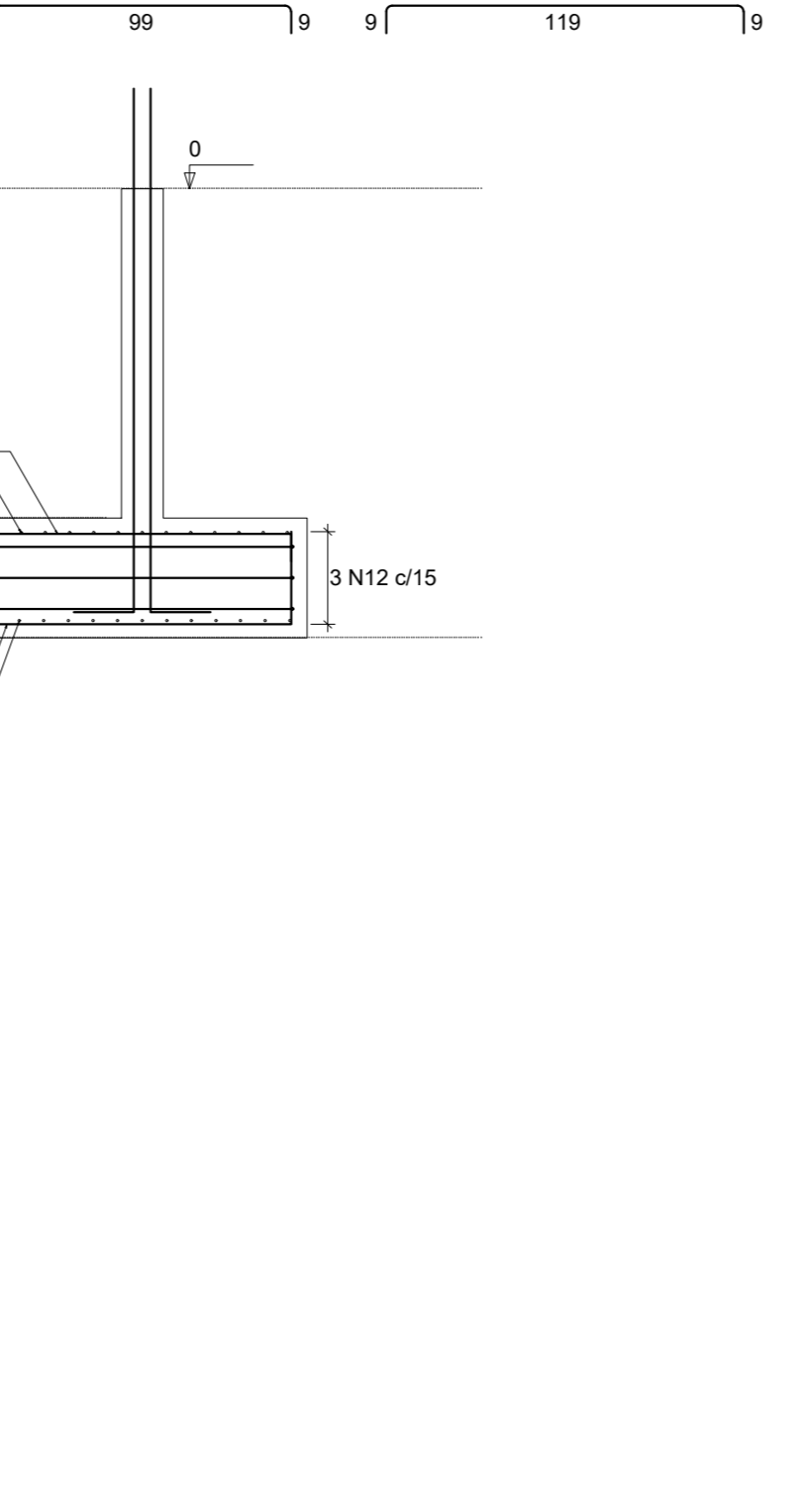
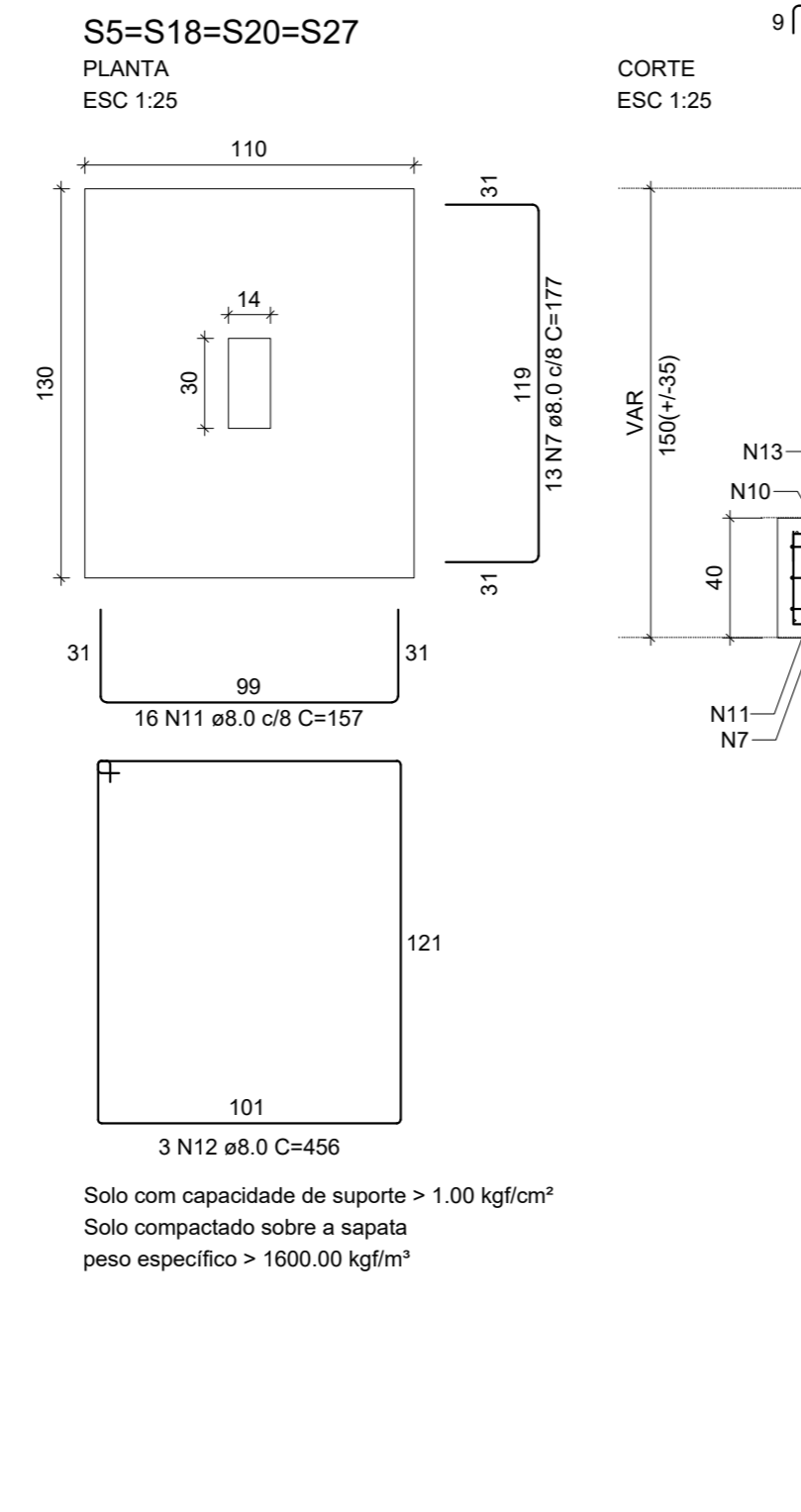
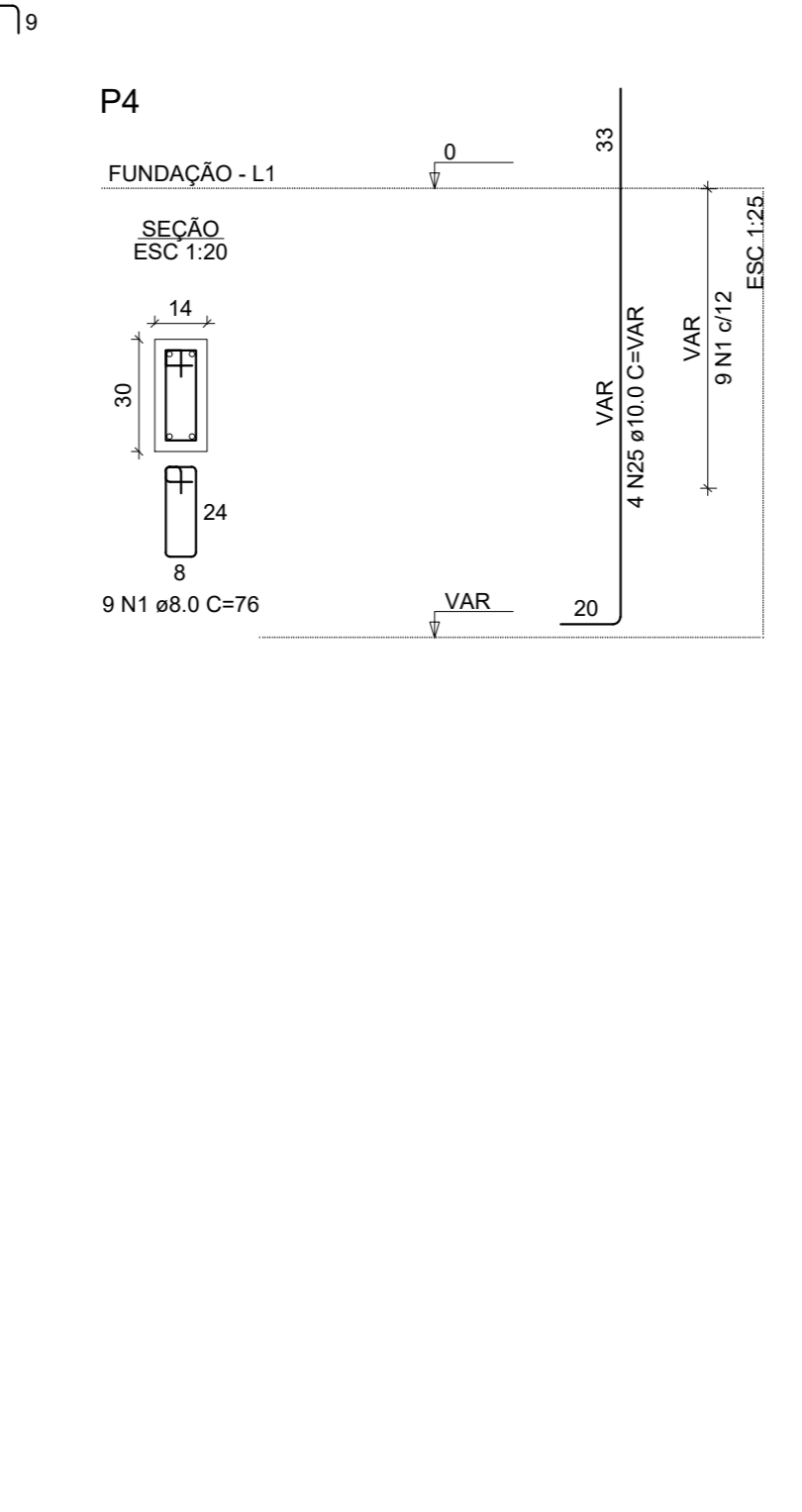
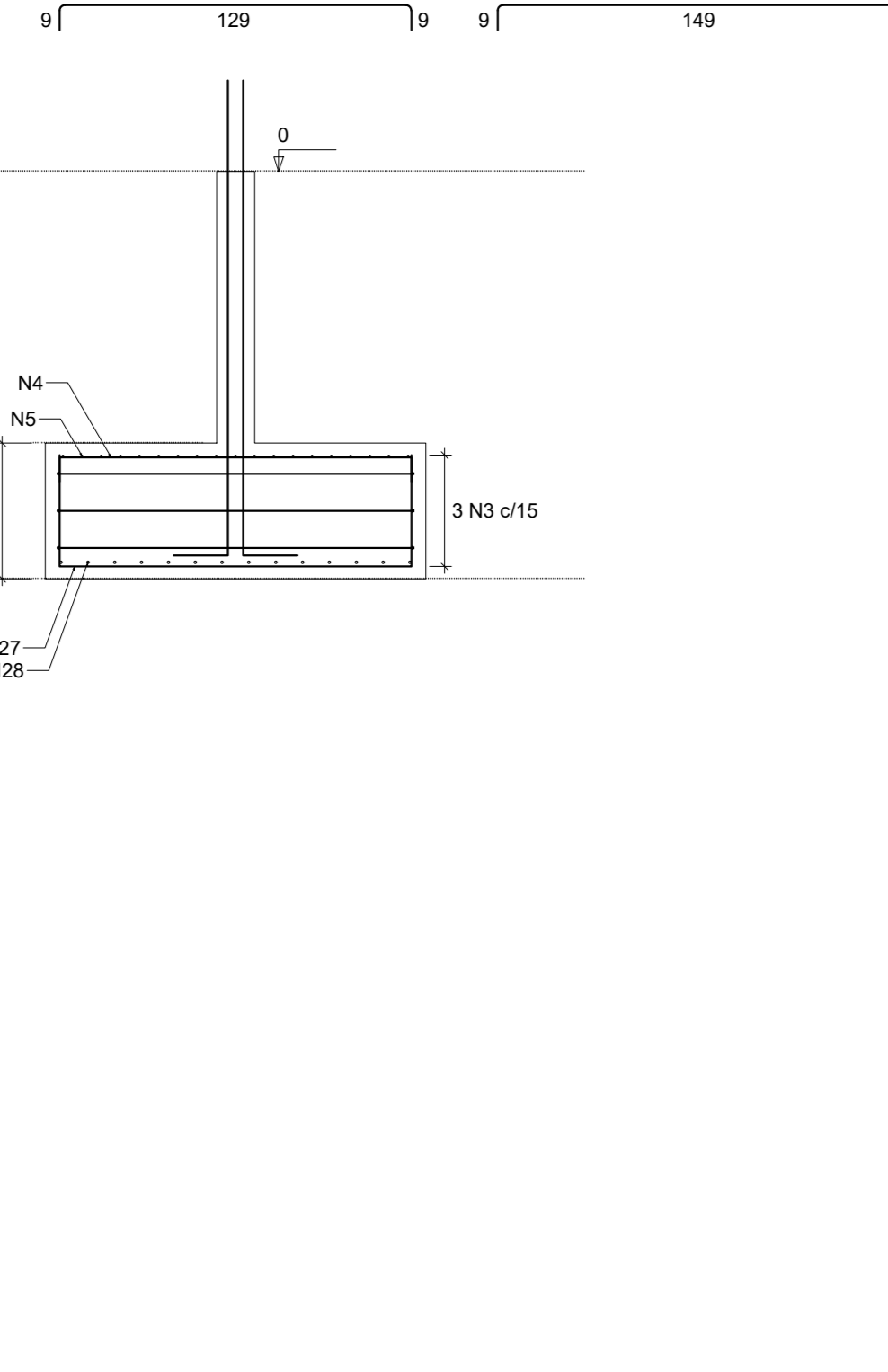
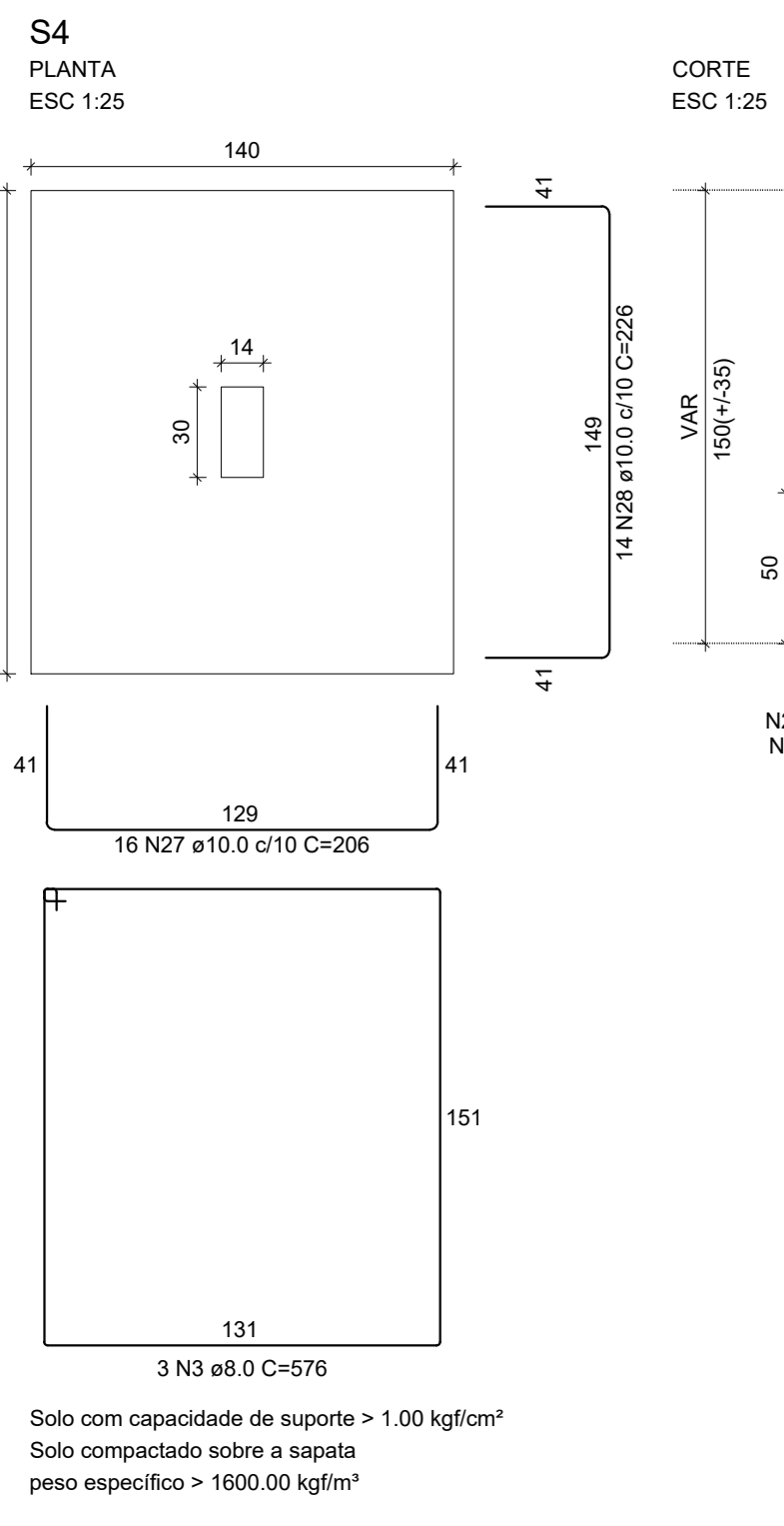


CAPO	N	DIAM (mm)	QUANT	C. TOTAL (cm)	C. TOTAL (cm)
36/P1-L2	1	8.0	1250	76	9874
P4-L1	2	8.0	54	68	3672
P15-L1	3	8.0	6	576	3456
P15-L2	4	8.0	44	143	6292
36/P1-L1	5	8.0	36	163	5864
36/P1-L1	6	8.0	112	167	18704
36/P1-L1	7	8.0	150	177	26550
36/P1-L1	8	8.0	21	476	9996
36/P1-L1	9	8.0	312	123	38376
36/P1-L1	10	8.0	150	133	19950
36/P1-L1	11	8.0	60	113	6780
36/P1-L1	12	8.0	12	456	5472
36/P1-L1	13	8.0	230	147	33810
36/P1-L1	14	8.0	276	127	35052
36/P1-L1	15	8.0	230	103	23950
36/P1-L1	16	8.0	69	416	28704
36/P1-L1	17	8.0	25	65	1625
36/P1-L1	18	8.0	30	77	2310
36/P1-L1	19	8.0	25	85	2175
36/P1-L1	20	8.0	15	276	4140
36/P1-L1	21	8.0	25	73	1825
36/P1-L1	22	8.0	20	83	1660
36/P1-L1	23	10.0	158	348	54664
36/P1-L1	24	10.0	152	VAR.	VAR.
36/P1-L1	25	10.0	20	VAR.	VAR.
36/P1-L1	26	10.0	6	67	402
36/P1-L1	27	10.0	32	206	6560
36/P1-L1	28	10.0	28	226	6328
36/P1-L1	29	12.5	12	531	6484
36/P1-L1	30	12.5	12	63	956

Solo com capacidade de suporte > 1.00 kgf/cm²
 Solo compactado sobre a sapata
 peso específico > 1600.00 kgf/m³

CAPO	DIAM (mm)	C. TOTAL (m)	PESO + 10% (kg)
CAPO	8.0	3877.8	1662.3
CAPO	10.0	945.9	641.5
CAPO	12.5	52.8	96
PESO TOTAL (kg)			2399.7

Volume de concreto (C-30) = 24.97 m³
 Área de forma = 212.31 m²



- NOTAS:
- 1- QUANDO NÃO INDICADA, A CONTRA-ELEÇÃO APLICADA EM LAJES E EM VIGAS DEVERÁ SER IGUAL A NO MÁXIMO, 1,25IF, NÃO MAIOR QUE 7 CM, SENDO "I" O COMPRIMENTO DO MENOR LADO.
 - 2- A CURA DO CONCRETO DEVERÁ TER INÍCIO 5 HORAS APÓS O TERMINO DA CONCRETAGEM.
 - 3- UTILIZAR ESPACADORES PARA GARANTIR O COBRIMENTO MÍNIMO DAS ARMADURAS.
 - 4- A RETRADA TOTAL DOS ESCORAMENTOS DEVERÁ SER REALIZADA SOMENTE APÓS 28 DIAS DA CONCRETAGEM.
 - 5- EM CASO DE DÚVIDAS, CONSULTE O CALCULISTA.

REV	DATA	EMISSÃO INICIAL	REVISÕES	FABIO	RESPONÁVEL
00					

PROJETO DE FUNDAMENTAÇÃO	PROJETO DE FUNDAMENTAÇÃO	PROJETO DE FUNDAMENTAÇÃO	PROJETO DE FUNDAMENTAÇÃO
ENGENHEIRO	ENGENHEIRO	ENGENHEIRO	ENGENHEIRO
RUA ALCIDES MEDEIRO CORREIA	RUA ALCIDES MEDEIRO CORREIA	RUA ALCIDES MEDEIRO CORREIA	RUA ALCIDES MEDEIRO CORREIA
SAPATAS E PILARES DO PROJETO	SAPATAS E PILARES DO PROJETO	SAPATAS E PILARES DO PROJETO	SAPATAS E PILARES DO PROJETO
FÁBIO HUDLER - CREA / SC 102.001-5	FÁBIO HUDLER - CREA / SC 102.001-5	FÁBIO HUDLER - CREA / SC 102.001-5	FÁBIO HUDLER - CREA / SC 102.001-5
1:50	1:50	1:50	1:50
REVISÃO	REVISÃO	REVISÃO	REVISÃO
00	00	00	00
AF 5662019	AF 5662019	AF 5662019	AF 5662019